

SDC Platinum™ v4.0 Release Notes

May 2009



THOMSON REUTERS

Welcome to SDC Platinum™ v4.0

Thank you for considering SDC Platinum 4.0. We are confident that this latest version of SDC Platinum will meet your Deal information needs.

In this pack you will find information on:

- Accessing SDC Platinum v 4.0
- SDC Platinum™ 4.0 enhancements and new features
- Feedback and comment mechanisms
- Key contacts

Product Overview

SDC Platinum™ is the industry's leading tool for corporate finance and capital markets transaction information and analytical capabilities. SDC Platinum™ is used by banking and consulting information professionals globally to access robust reports and analysis for due diligence, comparable deal and precedent analysis, market share analysis, business development and marketing.

Accessing SDC Platinum™ 4.0

NOTE: The downloading and installing of SDC Platinum 4.0 may have to be done by a technical support representative at your firm depending on how firm uses the application.

The SDC Platinum 4.0 release will be available via <http://download.thomsonone.com/>

You will need to register by clicking on *'Not registered yet? Create your own login now!'*

The temporary login account name is 'summer'. The access password is 'summer'.

You will be prompted to fill out account information. Please be sure to fill out all of the required fields. Once registered, an automatic email will be sent to you verifying your registration and access.

Using your new login and password, access the <http://download.thomsonone.com/> site.



Once logged in, navigate to the SDC Platinum group (should be a link next to the 'General' link). If you don't see the group, click the *'Add Additional Company to Access List'* link. The Group Access Name is 'summer' and the password is 'summer'. Then click on Platinum Software link and then download the file labeled SDC Platinum 4.0 Full Install.

There you will be able to download and save SDC Platinum 4.0. To install, simply double click on the installation file and follow the prompts. To setup your account, please follow the directions in the SDC Platinum v40 Setup Guide.

Release Notes

Data and Presentation of Data

- **Freeman Fees data availability*** – Freeman Fees are now part of SDC Platinum. Users can report on all the Freeman data items and can create fee league tables**.
 - *Clients may be charged an additional amount for Freeman Fees data.
 - **At this time custom analyses with Freeman Fees is not available on SDC Platinum.
- **Reconciliation (RECON) Report and Tearsheets** – Clients can now see an M&A League Table reconciliation report in a MS-Excel friendly format. Also, users can drill down from the report to a RECON tearsheet.

rd Session :con Repo		Mergers and Acquisitions Reconciliation Report Deals Updated Yesterday					
Historical Deal Number	Historical Date Updated	Comments	Historical Announcement Date	Historical Date Effective/ Unconditional	Historical Target Name	Historical Target Nation Code	
1730848040	01/27/2006	New Deal	01/27/2006		Arcelor SA	LX	
1730848040	01/27/2006	Advisor Added					
1730848040	01/27/2006	Advisor Added					
1730848040	01/27/2006	Deal Value Updated					
1730848040	01/27/2006	Rank Value Updated					
1730848040	01/27/2006	Acq. Adv. Credit Updated					
1730848040	01/27/2006	Acq. Adv. Credit Updated					
1730848040	01/27/2006	Advisor Added					
1730848040	01/27/2006	Advisor Added					
1730848040	01/29/2006	Advisor Added					
1730848040	01/29/2006	Advisor Added					
1730848040	01/29/2006	Advisor Added					
1730848040	01/29/2006	Advisor Deleted					
1730848040	01/29/2006	Advisor Added					
1730848040	02/08/2006	Advisor Added					
1730848040	02/09/2006	Advisor Added					
1730848040	02/10/2006	Advisor Added					
1730848040	02/14/2006	Advisor Added					
1730848040	02/14/2006	Advisor Added					
1730848040	02/14/2006	Advisor Added					

ard Sessio
econ Repo

Report 1 of 1

Mittal Steel Co NV buys Arcelor SA
93.70% Completed
Rank Value (US\$ mil): 39,463.746
Date Announced: 01/27/2006
SDC Deal Number: 1730848040

Transaction Details		Target Information		Acquirer Information	
Date Announced:	01/27/2006	Target Nation:	Luxembourg	Acquirer Nation:	Netherlands
Rank Date:	01/27/2006	Target Ultimate Parent Nation:	Luxembourg	Acquirer Ultimate Parent Nation:	Luxembourg
Status:	Completed	Target Financial Advisers:	Deutsche Bank AG Merrill Lynch BNP Paribas SA Calyon BBVA UBS Investment Bank Morgan Stanley Lazard JP Morgan Santander Central Hispano Inv. Hawkpoint Partners Petercam Securities SA	Acquirer Financial Advisers:	Credit Suisse Group Goldman Sachs & Co Citigroup HSBC Holdings PLC Societe Generale
Current Rank Value (US\$ mil):	39,463.746				
Current Share Price Paid by Acq. (\$):	50.02				

Company Updates			
Target Update Description	Date	Value	Reason
Target Name	01/27/2006	Arcelor SA	New Deal
Target Nation		Luxembourg	New Deal
Target Ultimate Parent Nation		Luxembourg	New Deal
Acquirer Update Description	Date	Value	Reason
Acquirer Name	01/27/2006	Mittal Steel Co NV	New Deal
Acquirer Nation		Netherlands	New Deal

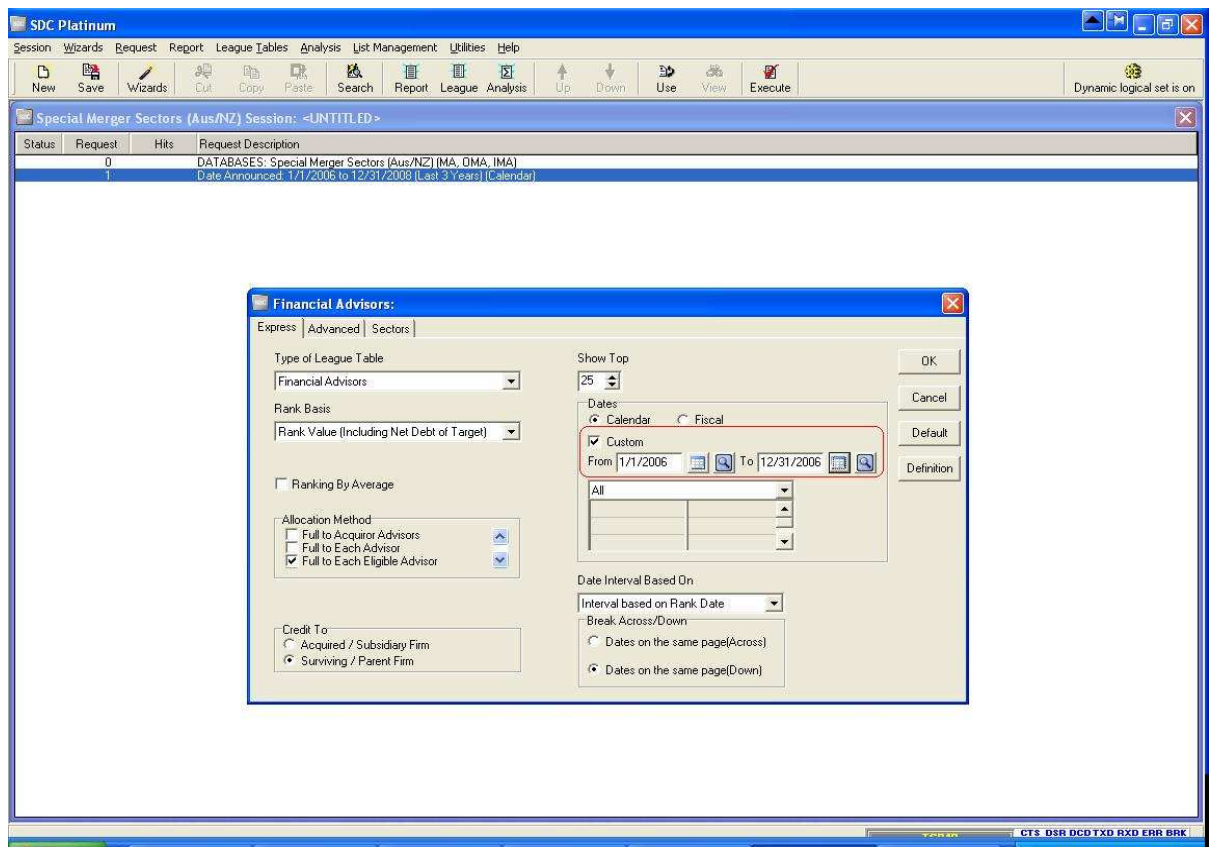
- **Statistics** – Statistics reports are now in an Excel friendly format and include variance, standard deviation and quartile measures.

A	B	C	D	E	F	G	H	I	J
More statistical measures. Exported directly into Excel cells.									
RANKVAL									
Sum	Count	Avg	Min	Max	Variance	Std Deviation	Quartile1	Quartile3	Median
129972.788	293	443.593	.003	64623.263	17097462.392	4134.908	2.010	35.000	7.

- **Estimated Deal Value** – Estimated Deal Value is now a part of M&A tearsheets. If the rank/deal value of a transaction doesn't exist, and an estimated deal value does exist, the estimated deal value is shown on the M&A spreadsheet in the Transaction Statistics section of the tear-sheet. Estimated Deal Value can be accessed using the data item Analyst Estimated Value (\$mil) (ANALYST_EST_VALUE) and Analyst Estimated Value (Host mil) (HOST_ANALYST_EST_VALUE). Estimated Deal Value has not gone through the extensive validation process that produces our Rank Value. It is estimated by our analysts based on press reports, preliminary information from the transaction parties etc. It is not used to determine our rankings in any way.

Streamlined creation of sessions

Custom Dates in Custom League Table Creation – Users have flexibility in creating a date range for League Tables. In earlier versions of SDC Platinum, the date range chosen in the second line of the session was always used as the date range over which the league table operated. In SDC Platinum 4.0, users can choose another date range. This provides additional flexibility to the user in choosing how league tables operate across various date ranges. Users do not have to set up multiple session with multiple date ranges to create the league tables they need.



Click-through to filing reports

SDC Platinum 3.0 introduced this feature, but some client network setups prevented the use of the Filings link. Those restrictions have been removed in SDC Platinum 4.0.

	Issue Date	Issuer	Nation	Principal Amt - sum
[F]	15/01/07	Industrial Bank Co Ltd	China	2,055.2
	17/01/07	Beiersdorf AG	Germany	1,565.7
	22/01/07	Merck KGaA	Germany	1,413.4
	23/01/07	Credit Agricole SA	France	5,186.1
	23/01/07	Credit Agricole SA	France	5,186.1
	23/01/07	Merck KGaA	Germany	1,413.4
[F]	25/01/07	Alpine Total Dynamic	United States	3,520.0
	31/01/07	Gold Fields Ltd	South Africa	1,246.2
[F]	06/02/07	TransCanada Corp	Canada	1,459.1
	09/02/07	Meinl European Land Ltd	Jersey	1,922.2
	12/02/07	Oil Refineries Ltd(Bazan}	Israel	1,517.7
	12/02/07	Oil Refineries Ltd(Bazan}	Israel	1,517.7
	13/02/07	Ping An Ins(Grp)Co of China	China	5,018.1
	21/02/07	Sberbank	Russian Fed	8,785.7
	21/02/07	Sberbank	Russian Fed	8,785.7
	21/02/07	Sberbank	Russian Fed	8,785.7
[F]	22/02/07	Eaton Vance Tax-Managed Global	United States	5,500.0
	22/02/07	Shinhan Financial Group Ltd	South Korea	1,208.2
[F]	27/02/07	Sports Direct International	United Kingdom	1,822.4
	01/03/07	Honda Motor Co Ltd	Japan	1,355.0

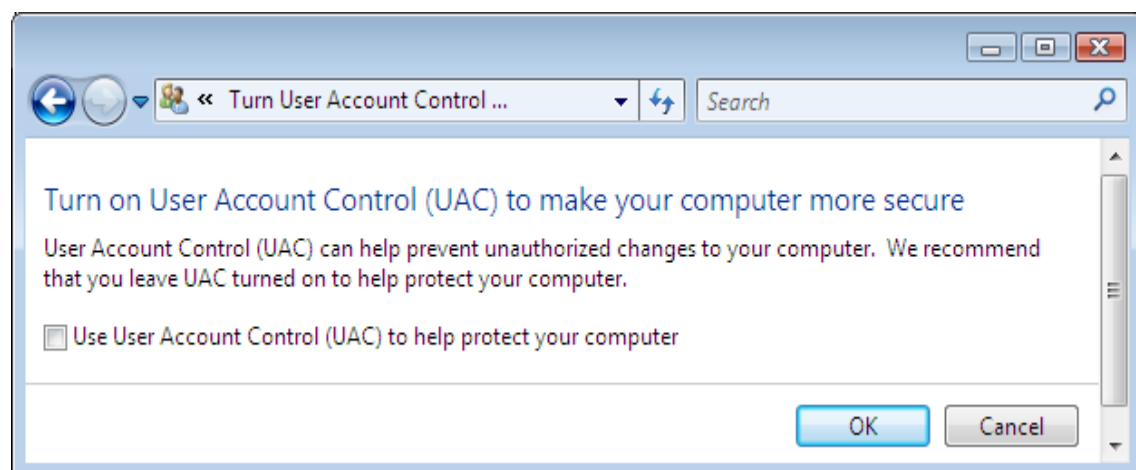
Platinum on Windows Vista

Pre-installation

User Account Control, a security feature introduced in Vista, should be turned off. This can be done only from a user login with Administrator access on the system.

How to turn off User Account Control

1. Go to Control Panel -> Classic View -> User Accounts -> Turn User Account Control On or Off.
2. Ensure that "Use User Account Control (UAC) to help protect your computer" is unchecked.



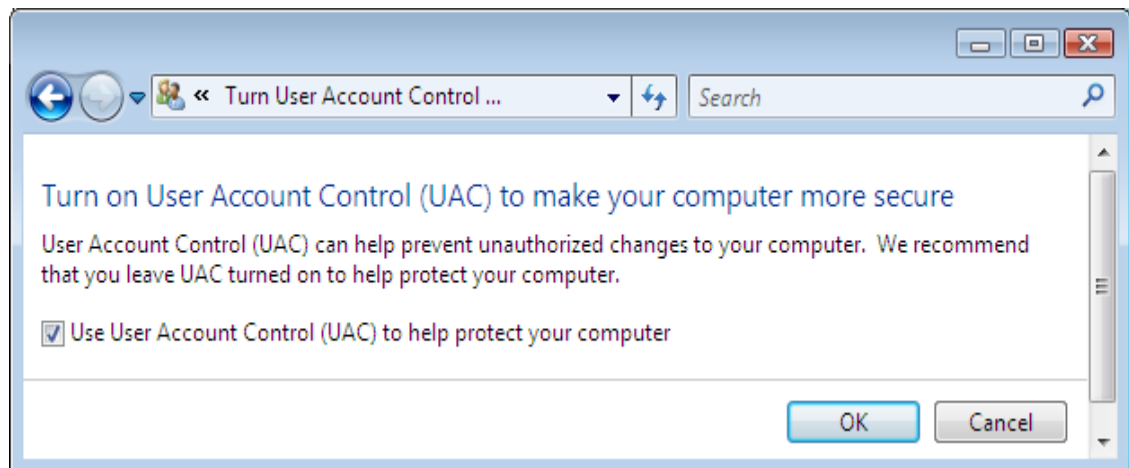
3. Re-start the system

Installation Procedure

1. Installation has to be done by a user with Administrator access on the system.
2. Run setup.exe to install Platinum.
3. Configure SDC tools.
4. Turn on User Account Control (Microsoft recommends keeping this option turned on).

How to turn on User Account Control

1. Go to Control Panel -> Classic View -> User Accounts -> Turn User Account Control On or Off.
2. Check the "Use User Account Control (UAC) to help protect your computer" box.



3. Re-start the system.

Working with SDC Platinum 4.0

We recommend working with SDC Platinum 4.0 from a Standard user login. A Standard user should have full control (modify, read, write, delete and execute) on the SDC Platinum home directory & all sub folders. Platinum home will be the folder where the product is installed. That folder will have the sub-folders Bin, Library, Dbf and Usr.

Feedback

Your feedback is extremely valuable to us. We look forward to discussing SDC Platinum™ with you and encourage you to reach out to our global team as detailed below with your feedback and questions.

Client Support / Key Contacts

As always, we offer full service support, available 24x7. We have fully trained support staff based in New York, London and Hong Kong who will be able to assist you with any technical issues, questions, or feedback you may have.

Please inform your support person that you are using the SDC Platinum™ 4.0 Version

Client Support Contact Numbers:

United States	investment-banking-support@thomson.com	Tel: +1 888-989-8373
Europe	ib.support.europe@thomson.com	Tel: +44 (0) 870 191 0591
Asia	ib.support.asia@thomson.com	Tel: +632 878 5777