

THOMSON ONE CORPORATE FINANCE

EMPOWERING INFORMED AND TIMELY STRATEGIC DECISIONS

How are you planning to grow your business? How do you ensure your borrowing costs are as low as they can be? How do you manage your financial exposure or track market activities? Rely on Thomson ONE Corporate Finance to optimize your funding strategy and financial returns.

Our flexible solution couples institutional-quality information with proprietary analytics to help you:

- Make informed and timely market decisions with access to institutional-quality data, analytics, and proprietary content.
- Lower borrowing costs with an in-depth understanding of credit spreads.
- Perform in-depth benchmarking analyses to understand how your performance and capital structure compare to your peers.
- Research M&A activity by region or industry to learn which firms advised on a deal, what premium was paid, how the deal was financed, and more.
- Gather competitive information on your peers by company or business unit level.
- Monitor global market developments and manage financial exposure to lower funding costs and optimize returns.
- Uncover opportunities by screening the universe of bonds, credit default swaps and indices.
- Understand how your capital structure compares to others.
- Export data to Excel to conduct financial modeling and in-depth analysis.

THOMSON ONE CORPORATE FINANCE FEATURES

Market Information

- **Market data** - Keep a pulse on the market. Uncover stock quotes, pricing data, key ratios, valuation metrics and market moving data across securities, indices, treasuries and currencies.
- **IFR markets** - Gain insight into market activity. Discover sentiment across global fixed income, foreign exchange, capital markets and emerging markets.
- **Reuters News** - Go inside with Reuters News. Into the center of financial markets. Into the heart of major world events. And with thousands of experts in the field, you'll be there in real-time, so you never miss a moment.

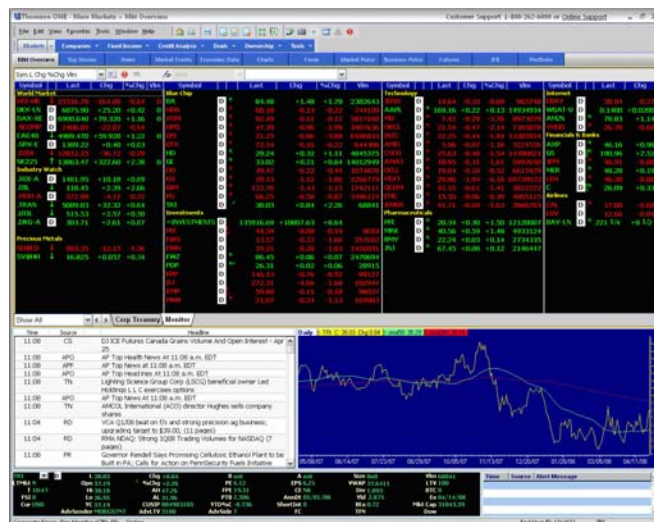
- **Charting** - Track movements and trends. Visually compare a security's price to the benchmarks of your choosing.
- **Foreign exchange data** - Gauge fair execution levels with spot and forward rates. Gain integrated access to bank composite rates and inter-dealer pricing levels.
- **Cash deposit rates** - Make timely decisions. Use Tullett Prebon's cash deposit rates to determine short-term borrowing or investing.
- **Index information** - Generate ideas and identify opportunities at a macro level. Screen for relevant indices using Datastream's comprehensive index service.

Company Details

- **Public and private company profiles** - Get detailed profiles on companies. Locate a description of the company's business, latest financials, fundamentals, price charts, key executives, competitors and more.
- **Comparables** - Compare your target firm to its peers. Uncover key performance, financial, price and earnings metrics as determined by SIC, GICS, DJ codes or your own custom criteria. Click on a company of interest to access more detailed information.

WHY THOMSON REUTERS

- We provide the largest collection of business information in the world. Our global information is gathered and analyzed by regional experts.
- Only our solutions provide integrated access to our proprietary information, including Reuters News, Investext, StreetEvents, First Call, SDC, Datastream and more.
- More than 6,000 corporations rely on our services which are backed by outstanding local client support.



Monitor and analyze real-time market data.



ADDITIONAL SERVICES

Complement the core offering with the following add-on modules:

Broker Research - Monitor sell-side views of a company or industry. Access new and archived research from thousands of market and industry experts, many of whom contribute only to Thomson Reuters.

Hedge Analytics (powered by Reval) - Price and mark-to-market financial instruments, including derivatives. Easily input deal terms and parameters. Save and mark-to-market your trades, or perform hypothetical calculations to analyze your risk and financial exposure.

Thomson Reuters Datastream - Investigate the correlations and relationships between global economic indicators and asset classes. Analyze historical data going back more than 50 years across economic indicators, bond and equity indices, commodities, futures and options, fixed income securities, interest and exchange rates, unit and investment trusts, and more.

- **Financials** (standardized and as-reported) - Evaluate a company's fiscal health and performance. Analyze standardized financials with click-through to the source document. Access the as-reported filings directly from the SEC database with information on directors and officers.
- **Filings** - Assess the viability of a company. Uncover a complete listing of all EDGAR filings, including 10K, 10Q, 8K, proxy, prospectus, annual and quarterly reports, registration statements and more.
- **Current mean estimates** - Gauge sell-side sentiment. View estimate tearsheets and forecast reports across EPS and Sales measures. Access earnings surprise reports to understand how a company has performed relative to expectations.
- **People data** - Learn more about officers and directors. Screen by the company name to identify key executives and click on a name for more detailed information, or search directly by the individual's name. Obtain biographical information on more than 700,000 executives.
- **Excel add-in** - Conduct your own analysis. Download data to Microsoft Excel to conduct financial modeling and in-depth assessment. The data and reports in the desktop solution can be exported with a single click.

Economic Insight

- **Key economic indicators** - View key economic indicators. Using Datastream, access an interactive chart and overview for over 5,000 indicators from 65 countries.
- **Economic calendar** - Obtain a list of current events. Locate economic events for the current day or week ahead.

Deals Data

- **Transaction data** - Gain a better understanding of M&A activity levels. View current and historical deals data on M&A transactions, equity and bond issues and loans. Learn which firms advised on a deal, what premium was paid, how the deal was financed, and more. Filter the deals information by type, time period, industry and region, or other specified criteria.
- **League tables** - Monitor deal flow. Access league tables to see how the investment banks you work with rank against their peers.
- **Screening capabilities** - Identify public and private company targets. Filter your search based on your specific criteria and click on the company name for more detailed information.

Fixed Income Intelligence

- **Fixed income benchmarks** - Locate key fixed income benchmarks. Includes country composites, spot and forward rates, US certificates of deposit information, US forward rate agreements, US Treasury benchmarks and more.
- **Municipal information** - Access the Municipal Market Monitor. Retrieve in-depth news, data and analysis on the municipals marketplace.
- **Forward rate tables** - Uncover forward contracts. Assess future monthly rates and the relative value of different investment options.
- **Interbank Offered Rates** - Locate the rates for all G7 countries. TIBOR rates include both Japanese Yen and Euroyen.
- **Bond screening tool** - Identify fixed income securities. Filter for corporate, municipal, agency and/or government securities that match your criteria. Drill down for a detailed description.
- **Credit ratings and analysis** - Obtain S&P and Moody's ratings. Uncover a company's long-term and short-term debt; and analyze the credit spreads. On one screen, view the critical fixed income data you need to measure your risk.
- **Credit default swaps (CDS)** - Gain visibility into the CDS market. Leverage our credit analysis to monitor CDS pricing trends for you and your peers.
- **Yield curves and analysis** - Measure cost of borrowing and bond maturity. Use the price yield calculator to generate indicative data, market convention yields, standard risk measures and net money calculations.

Trading Analytics

- **Futures data** - Uncover all futures contracts. Also locate the spot price (if available) for a commodity or financial instrument.
- **Equity trading analytics** - Track current trading trends. View 30 days of transactions, including prices, time, volume at price, and trade sizes for a security.

North America: +1 866 915 9891

corporateservices@thomsonreuters.com
thomsonreuters.com

