

# BUSINESS INTELLIGENCE SOLUTIONS

ACCURATE AND UNIQUE MARKET INSIGHT FOR RESEARCH AND STRATEGIC DECISION-MAKING

How do you research your peers and industry? What information do you use to uncover potential partners or acquisition targets, or assess counterparty risk? Do you have to search through multiple resources? Is the information insightful and actionable? Our Business Intelligence solutions deliver the intelligent information you need to streamline your research capabilities and execute your company's growth strategy.

The Web-based Thomson ONE platform combines institutional-quality information from across Thomson Reuters, with proprietary analytics to deliver intelligent and actionable insight. Customize your workspace so you only access the components you need, in the order that mirrors your workflow.

## THOMSON ONE CORPORATE RESEARCH

When researching your peers and industry trends, do you have to search through multiple databases? Use one Web-based platform to empower informed and timely decision-making across your company. **Thomson ONE Corporate Research** integrates all the tools you need to:

- Gather competitive information on your peers, by company or business unit level.
- Monitor sell-side views of a company or industry through broker research. Locate hundreds of market and industry experts, many of whom contribute only to Thomson Reuters.
- Screen for companies that meet your specific criteria, then view profiles and comparables.
- Access corporate conference call webcasts, briefs and transcripts.
- Track global industry news, insight and trends.

## THOMSON ONE CORPORATE INTELLIGENCE

What information do you use to reach informed and timely strategic decisions? How do you gather competitive intelligence and monitor market developments that could impact your company or industry? Turn to **Thomson ONE Corporate Intelligence**. Access all of the information and features available on Thomson ONE Corporate Research, plus the tools you need to:

- Perform in-depth benchmarking analysis to understand how your performance and capital structure compare to your peers.
- Assess the potential risk within your existing or potential counterparties.

- Research M&A activity by region or industry. Learn which firms advised on a deal, what premium was paid, and how the deal was financed.
- Monitor global market developments.
- Manage financial exposures to lower funding costs and optimize returns.
- Leverage our Spreadsheet Link Excel add-in to develop custom models and conduct company analysis using pre-built templates.
- Access market-moving information on your BlackBerry®.

## THOMSON ONE CORPORATE DEVELOPMENT

Are you looking to buy or divest assets? How are you identifying and evaluating targets? Look no further than **Thomson ONE Corporate Development**. Access all of the information and features available on Thomson ONE Corporate Intelligence, plus the tools you need to:

- Uncover venture and buyout funds, private equity backed companies and limited partners around the world.
- Research recent and historical debt and equity transactions.
- Identify trends and conduct comparable deal analysis.
- Learn which funds own shares in the companies you are evaluating.
- Access quantitative and qualitative company-disclosed guidance, and obtain an in-depth view of trends.

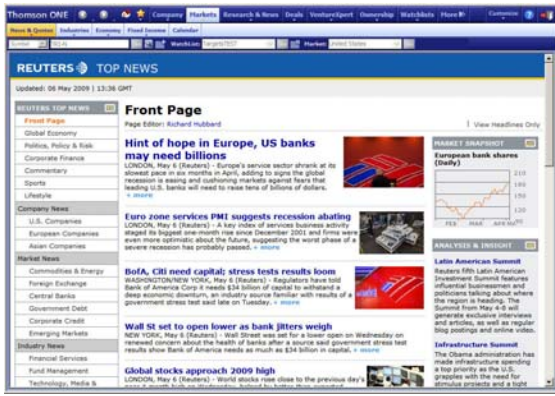
## WHY THOMSON REUTERS

- We provide the largest collection of business information in the world. Our global content is gathered and analyzed by regional experts.
- Only our solutions provide integrated access to our proprietary information, including Reuters News, Investext, StreetEvents, First Call, Datastream and more.
- Access our proprietary information and tools via the Web, datafeed or mobile device.
- More than 6,000 corporations rely on our services which are backed by outstanding local client support.

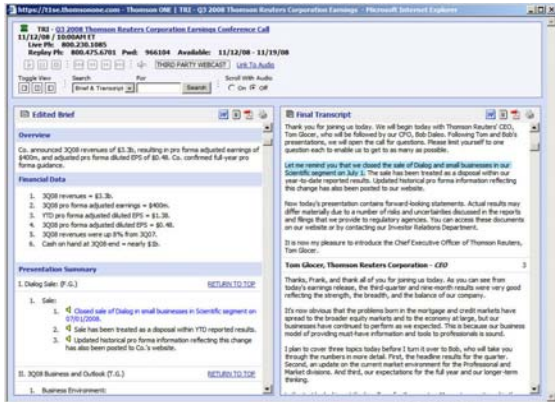


Monitor and analyze comprehensive, global deals data.

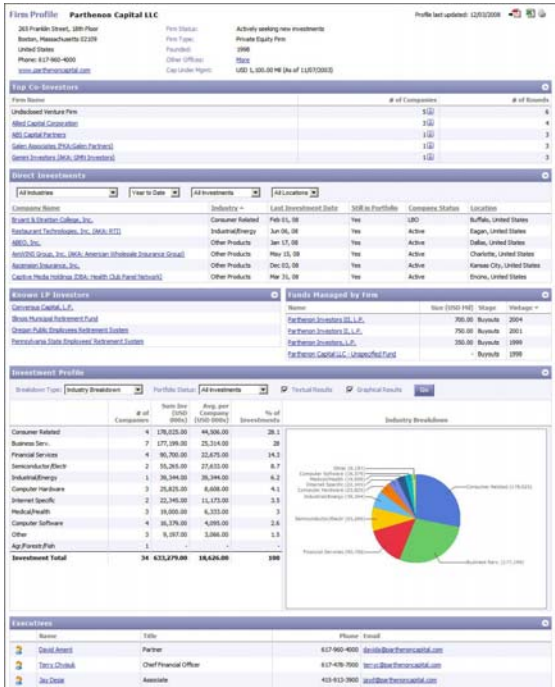




With more journalists and bureaus worldwide than any other news organization, we report on the most sectors, geographies and markets.



Discover what your peers are saying on their earnings calls by accessing the webcast, brief and transcript.



Our proprietary VentureXpert database contains detailed profiles on portfolio companies, firms, funds and limited partners. Investments data goes back to 1969.

### THOMSON ONE

Use one flexible, Web-based platform to empower decision-making across your company. The comprehensive information and analytics available within each workspace are outlined below.

### Thomson ONE Corporate Research

- Investext research – Monitor sell-side views of a company or industry. Leverage access to Investext, the largest collection of after-market and independent research. Many contributors only distribute their research via Thomson Reuters.
- Reuters News – Reuters News takes you inside. Monitor news about the general political, social, and geographic environment surrounding your organization.
- Significant developments – Quickly identify key events affecting company performance. Search by date, headline, industry and topic, such as M&A, spin-offs, restructuring and earnings outlook.
- Market data – Keep a pulse on the market. Analyze pricing data, key ratios, valuation metrics and market moving news across multiple companies and indices.
- Public and private company profiles – Get detailed profiles on companies. Locate a description of the company's business, latest financials, fundamentals, price charts, key executives, competitors and more.
- Screening capabilities – Identify public and private company targets. Filter your search based on your specific criteria and click on the company name for more detailed information.
- Comparables – Evaluate a firm against its peers. Uncover key performance, financial, price and earnings metrics as determined by SIC, GICS, DJ codes or your own custom criteria. Click on a company of interest to access more detailed information.
- Filings – Assess the viability of a company. Uncover a complete listing of all EDGAR filings, including 10K, 10Q, 8K, proxy, prospectus, annual and quarterly reports, registration statements and more.
- Fundamentals - Evaluate a company's fiscal health and performance with both as-reported and standardized financials. Trace the company's financials directly back to source documents by clicking on any hyperlinked item.
- Corporate debt – Uncover liabilities. Obtain an overview of a company's overall debt and bond ratings.
- Ownership summary – Locate the top 10 institutional holders of a company. Access their shareholder composition, rotation, share concentration and investment style.
- People data – Learn more about officers and directors at a company. Screen by the company name to identify key executives and click on a name for more detailed information, or search directly by the individual's name.
- Corporate actions – Assess how a company's corporate actions compare to their peers with access to past and future actions. These include historical and planned dividends going back to 1984, stock splits that have already taken effect or have been announced by the company, and takeovers and reorganizations that have occurred or been announced within the past 6-12 months with a specific effective date.
- Datastream index information – Identify and track macro-economic trends. Screen for relevant indices using Datastream's comprehensive index service.
- StreetEvents – Get the inside scoop on your peers, partners and other companies of interest.
  - Webcasts and transcripts – View the webcasts and full-text transcripts of their conference calls.
  - Briefs – Obtain unbiased summaries of company conference calls across your peers and potential targets.
  - Delta Reports – Reduce the manual process of comparing changes between a company's sequential 10-Qs and 10-Ks. Delta Reports highlight all the changes for you. Access the report in the format that best suits your needs: online or PDF.



## SCALABLE SOLUTION

Complement the core offering with add-on modules:

- **Thomson Reuters Datastream\*** - Leverage our industry-renowned data (including actuals and forecasts) to explore macroeconomic trends and the impact they may have on your company and industry. Datastream enables sophisticated time series analysis across a broad range of financial instruments.
- **Thomson Reuters Datastream Credit Analysis\*** - Assess business risk by uncovering credit analytics, credit default swap pricing, and ratings from Moody's and S&P. Gain a more comprehensive understanding of the entire capital structure of a company, including debt and debt maturity.
- **Thomson Reuters News Archive** - Locate historical news articles from 12,000 global sources including newspapers, newswires, magazines, industry and scholarly journals, blogs and more.
- **Reuters Domestic News** - Access local language news with added depth into local economic, financial markets and political news. Ideal for multi-national corporations with regional offices needing deeper local coverage.

*\*Only available with the Thomson ONE Corporate Intelligence and Thomson ONE Corporate Development solutions*

North America  
+1 866 915 9891

UK & Ireland  
+44 (0)20 7542 0400

Germany, Central Europe,  
Nordics & Russia  
+49 69 7565 1570

France, Italy, Spain, Portugal  
& Benelux  
+33 1 5332 3915

Middle East & Africa  
+971506320428

Asia Pacific & Australia  
+61 2 9373 1200

corporateservices@thomsonreuters.com  
thomsonreuters.com

## Thomson ONE Corporate Intelligence

For more detailed market and peer analysis, access all of the information and tools available in Thomson ONE Corporate Research, as well as:

- **First Call research** - Depending on your broker relationships, access real-time broker research from First Call.
- **First Call estimates** - Gauge sell-side sentiment. Get real-time updates for detailed, historical and consensus broker forecasts across more than 20 different financial measures.
- **Estimate aggregates** - Obtain bottom-up earnings forecasts for over 50 countries and major international indices to identify growth opportunities across regions, industries and sectors.
- **SDC M&A data** - Gain a better understanding of M&A activity levels. View comprehensive deals data on current and historical M&A transactions. Learn which firms advised on a deal, what premium was paid, how the deal was financed, and more. Filter the deals information by type, time period, industry and region, or other specified criteria. Access league tables to see how the investment banks you work with rank against their peers.
- **Deal insight** - Gain a complete picture of the deal-making landscape by industry or region. Uncover dynamically updated headlines covering M&A, private equity/venture capital and capital markets information on a global level.
- **Thomson Reuters Spreadsheet Link** - Leverage our sophisticated and easy-to-use Microsoft® Excel add-in for detailed analysis and custom modeling. Use our pre-built templates or populate your existing models and have them dynamically update. Should you need any support, our consultants are available to help you build exactly what you need.
- **Broker overview** - Locate summarized information about a particular broker. Access contact details, industry coverage, relevant statistics, and number of forecast reports and revisions submitted the previous week.
- **Thomson ONE Mobile** - Stay connected when you're on the road. Access news, alerts, market intelligence and more on your hand-held device.

## Thomson ONE Corporate Development

For in-depth deals analysis needed to fuel your growth strategy, receive all of the information and tools available in Thomson ONE Corporate Intelligence, as well as the following:

- **Transaction data** - In addition to comprehensive M&A data, access current and historical data on equity and bond issues, loans and project finance deals. Leverage this data to identify trends, conduct comparable deal analysis, perform due diligence, and get a better understanding of activity levels across a particular industry or region.
- **Equity ownership** - Uncover detailed holdings data. Know which funds own shares in the companies you are evaluating. Filter by region, investment styles, top 50 holders and top 10 mutual funds.
- **StreetEvents Guidance** - Get a full picture of a company's financial performance. Gather company expectations from historical and current disclosures. Link directly from the guidance data points to their source document--transcripts, press releases and webcasts.
- **VentureXpert** - Access comprehensive information and analytics to identify potential targets or investors. Search for venture funds, buyouts, private equity funds and firms, executives, venture-backed companies, and limited partners around the world. Locate fund performance, commitments, disbursements, and statistics.



THOMSON REUTERS