

DATASTREAM ADVANCE

INVESTIGATE THE VALUE OF YOUR IDEAS

Thomson Reuters Datastream Advance is a global research solution that enables sophisticated analysis across a broad range of financial instruments. Datastream Advance allows you to analyze and map historical trends and relationships, validate trading ideas, and generate new opportunities. Datastream Advance is available as a standalone product or fully integrated within Thomson ONE desktop products. Additionally, Reuters 3000 Xtra customers can now access the value of Datastream Advance through an attractive combination price package.

ACCESS THE WORLD'S MOST COMPREHENSIVE TIME SERIES DATABASE

Datastream offers access to an unrivaled set of historical financial content that allows users to investigate the correlations and relationships of global economic indicators and asset classes.

You have the ability to blend together different content sets and better understand how indicators in one field impact another.

The depth and breadth of data that you can analyze is truly remarkable:

- Up to 50 years of history on many series
- Over 3.5 million global financial instruments and indicators
- Over 10,000 different fields
- Over 75,000 active (and 30,000 inactive) securities
- Covering 175 countries in 60 global markets
- Totalling over 140 million time series

Among the market-leading content sets available:

- **Equities and fundamentals** – Data sourced direct from exchanges, international suppliers, and published reports. Includes adjusted & unadjusted pricing, volume, market cap, earnings, dividends, financials, fundamentals, ratios, valuations, forecasts, dead series, and more.
- **I/B/E/S Estimates** – Analyst forecasts via 26 measures for some 21,000 companies.
- **I/B/E/S Global Aggregates** – Earnings forecasts on a market, region, industry and sector level.
- **Unit and investment trusts** – Extensive pricing and dividend coverage of 120,000 funds, including daily calculated asset values.
- **Indices** – Unrivaled coverage of over 100,000 indices, including equity benchmarks such as MSCI, FTSE and S&P; bond indices such as JPMorgan, Iboxx and Citigroup; government bond indices; proprietary Datastream indices including global region, sector and aggregate indices.
- **Bonds** – Outstanding coverage of bonds, warrants, convertibles, CDS, domestic and international issues, including historical price and volume details.
- **International macroeconomics** – Historical coverage back to the 1950s sourced from central banks and national statistics offices. Includes forecast data for all leading and many developing economies.
- **Commodities** – Coverage includes 3,000 spot prices plus major indices from JPMorgan, Goldman Sachs; excellent coverage of metals, agriculture, chemicals, forest products, and semiconductors. Energy information from Platts includes 129 categories of assessments and over 25,000 individual series.

ABOUT THOMSON REUTERS

Thomson Reuters is the world's leading source of intelligent information for businesses and professionals. We combine industry expertise with innovative technology to deliver critical information to leading decision makers in the financial, legal, tax and accounting, scientific, healthcare and media markets, powered by the world's most trusted news organization. With headquarters in New York and major operations in London and Eagan, Minnesota, Thomson Reuters employs more than 50,000 people in 93 countries. Thomson Reuters shares are listed on the New York Stock Exchange (NYSE: TRI); Toronto Stock Exchange (TSX: TRI); London Stock Exchange (LSE: TRIL); and Nasdaq (NASDAQ: TRIN). For more information, go to www.thomsonreuters.com.



Datastream Advance is fully integrated within Thomson ONE Investment Management.





Our sophisticated interactive charting allows for powerful analysis of data and correlation studies.

- **Money market instruments** – Forex rates for over 45 currencies, with comprehensive emerging markets coverage; over 2,500 interest rates available from over 50 markets.
- **Futures and options** – Futures coverage from over 25 countries and 85,000 contracts; options coverage of 2,000 contracts and over 300,000 series.
- **Unique content** – Access proprietary Datastream content unique to the marketplace including CDS sector indices, Datastream calculated indices, and aggregated fundamental items.

Datastream Advance brings all of this content to your Windows desktop through a fully featured interface and a powerful set of add-ins, so it can be integrated with your Microsoft® Office applications.

GENERATE NEW IDEAS WITH POWERFUL INTERACTIVE CHARTING

Datastream Advance simplifies the graphical exploration of trends and relationships between series. Our intuitive interface allows for easy manipulation of content to help test ideas, construct themes, forecast market future conditions, understand cross asset relationships and identify patterns.

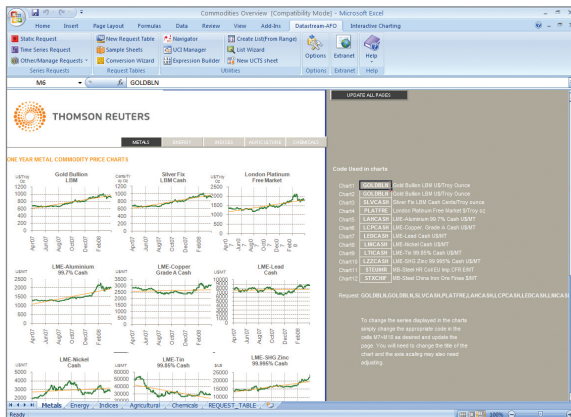
For example, you can identify the lag or leads to use for the best correlations between series, enabling new research ideas to be quickly evaluated. Our interface makes it easy to retrieve and analyze any series, from private equity indices to exchange traded funds to commodity prices.

EASILY INTEGRATE DATASTREAM INFORMATION INTO YOUR EXISTING WORKFLOW

Datastream Advance for Office enables you to build complex models and reports without using the Advance desktop interface. Data and charts can be linked within Microsoft® Excel, PowerPoint or Word documents so you can create spreadsheets, presentations and documents that can be quickly refreshed with the latest data at the click of a button. Datastream content can also be incorporated with MATLAB and EViews.

With Datastream Advance for Office you can:

- Set up dynamic point-in-time and historical data links within Excel
- Manage links within Excel to create presentations containing sophisticated charts and data
- Create symbol lists directly from a highlighted range in Excel
- Select and edit your mathematical expressions
- Refresh or edit Datastream charts right from Microsoft spreadsheets, presentations, and documents



Datastream Advance for Office allows you to build dynamic models and reports within Microsoft® Office applications.

U.S. and Canada

+1 800 782 5555

Europe/Middle East/Africa

+44 (0)20 7369 7000

Asia/Pacific

+632 878 5772

Japan

+813 6441 1480

salesinquiry@thomson.com

thomsonreuters.com