

TR GLOBAL INDEX **TR INDUSTRIALS INDEX**
TR AFRICA INDEX TR CHINA COAL INDEX
TR BASIC MATERIALS INDEX **TR US INDEX**
TR RETAIL INDEX TR KOREA TELECOM INDEX
TR ENERGY INDEX **INDEX USER GUIDE**

THOMSON REUTERS INDICES USER GUIDE 2011



THOMSON REUTERS™

IN SHORT

- Thomson Reuters Indices are a suite of proprietary Indices, covering multiple asset classes, including over 9000 Country, Regional and Sector indices. Thomson Reuters calculates over 9000 indices in Real Time.
- Investment Managers, Quants and Exchanges asked Thomson Reuters to enter this business since they are dissatisfied with current index providers' lack of flexibility and high cost structure. They find Thomson Reuters credible because of our 30-year experience in creating and calculating indices for well known index providers.
- In addition to our competitive pricing and our strong brand, Thomson Reuters Indices also have 3 quality differentiators:
 - Our unrivalled equity database which makes our indices broader and more comprehensive, particularly in Emerging Markets
 - Our superior liquidity filter which ensures that only investable stocks are included in all indices
 - Our classification system (Thomson Reuters Business Classification), which characterizes industries more relevantly
- Thomson Reuters Indices are available via datafeeds, as well as Thomson Reuters products such as Thomson Reuters Eikon; 3000 Xtra; Datastream; Starmine; Lipper and Portfolio Analytics.
- Finally, we also continue to provide custom index development and calculation services to fund management firms, investment banks, exchanges and index providers.

THE FULL LINE OF THOMSON REUTERS INDICES INCLUDES

EQUITY INDICES

- Over 9000 Proprietary Equity indices
- 51 Country Indices (24 Developed and 27 Emerging)
- 26 Region Indices
- Over 8500 Sector indices based on Thomson Reuters Business Classification (TRBC)

FIXED INCOME INDICES

- The Thomson Reuters VRDO (Variable Rate Demand Obligations) Index
- CDS Indices, e.g. Thomson Reuters Emerging Asia CDS Index
- The Thomson Reuters Government bond Indices, e.g. Thomson Reuters Australia Sovereign Debt Index

COMMODITY INDICES

- The Thomson Reuters/Jefferies CRB Index (TR/J CRB)
- The Thomson Reuters/Jefferies CRB In-The-Ground Global Commodity Equity Index (CRB-EQ) and related sub-indices
- The Thomson Reuters Equal-Weight Continuous Commodity Index (CCI)

TRADING SIGNALS

The Thomson Reuters Actual Volatility Forecast (AVF)

ECONOMIC INDICATORS

The Thomson Reuters/PayNet Small Business Lending Index (SBLI)

CUSTOM INDICES

Based on customer requests

INDEX CALCULATION SERVICES

HOW DO THOMSON REUTERS INDICES DIFFER FROM OTHER ESTABLISHED INDEX PROVIDERS?

LOWER COST – A COST EFFICIENT AND EASILY ACCESSIBLE INDEX SOLUTION FOR USERS

From index data feeds to index calculation, maintenance and distribution, our fully integrated and cost efficient solution allows end users to satisfy their needs for pricing information and benchmarks from one single data provider.

- Index Constituents, weights and 11 years of history are available to Thomson Reuters Desktop Clients at no additional fee.
- 4 Levels of Sector Indices for 51 countries and 26 regions are available at no additional fee.

QUALITY – A UNIQUE LIQUIDITY FILTER AND SUPERIOR SECTOR SCHEMA

- Our unique liquidity filter is based upon the most up-to-date research which assumes price as a basis for liquidity rather than volume. Most index providers use pure volume screens. This strict liquidity filter ensures that all constituents of Thomson Reuters Indices are investable, which is especially useful in Emerging and Frontier Markets.
- Thomson Reuters Business Classification (TRBC), which is used to build our sector indices, is more relevant and up to date than rival schemas. Examples of up to date sectors include renewable energy, environmental services and financial and commodity market operators sectors. For more details on TRBC and its benefits, please refer to <http://financial.thomsonreuters.com/trbc>

COVERAGE – UNRIVALLED EQUITY UNIVERSE

- Our deep global fundamentals database allows for a wider universe of stocks to be considered for index inclusion. The Thomson Reuters Global Index contains almost 10,000 stocks and our Global Emerging Markets variant contains approximately 3350 stocks, all of which have all met our strict liquidity requirements. This fits with increasing demands from clients who follow a total market investment approach.
- More global constituents leads to more constituents within country and region indices, allowing for more granular sector indices to be built, e.g. India Steel and Malaysia Forestry & Wood Products.
- TRBC has more stocks tagged to sectors in more countries (130) than rival sector schemas. This allows us to build deeper sector indices in more countries.

CONSISTENCY – SAME METHODOLOGY FOR ALL COUNTRIES AND REGIONS

- Our transparent and constituent methodology and liquidity filter is used for all Developed and Emerging markets. Other providers tend to relax their liquidity requirements for markets such as the Middle East, Pakistan, Argentina and Vietnam. Thomson Reuters Indices use the same methodology for all countries, allowing for better “apples to apples” comparisons.

ACCESSING THOMSON REUTERS INDICES ON KEY PRODUCTS

Thomson Reuters indices are available at no additional cost to Thomson Reuters desktop users.

The following pages show how to access indices on some of the most popular Thomson Reuters products.

For details on accessing indices on other Thomson Reuters such as Lipper for Investment Management, Quantitative Analytics and other feed products, please contact Philippe.Shah@thomsonreuters.com

For a masterlist of all Thomson Reuters Proprietary Equity Index codes, please go to http://thomsonreuters.com/content/financial/318731/indices_master_list.xls

For commodity index codes, please go to http://thomsonreuters.com/content/financial/pdf/i_and_a/indices/trj_crb_variants_codes.pdf

THOMSON REUTERS EIKON AND REUTERS 3000 XTRA

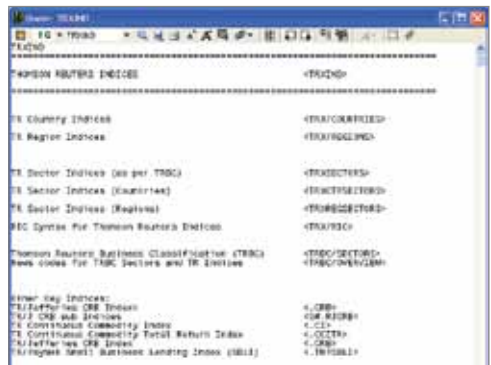
INDEX COVERAGE AND AVAILABILITY

- All Country, Region and Sector Equity Indices
- Commodity Indices
- Real Time Index Returns
- Current Index Constituents and Weights
- 11 years of Index History
- All news stories tagged with TRBC codes, making it easy to filter all the stories relevant for specific sectors indices

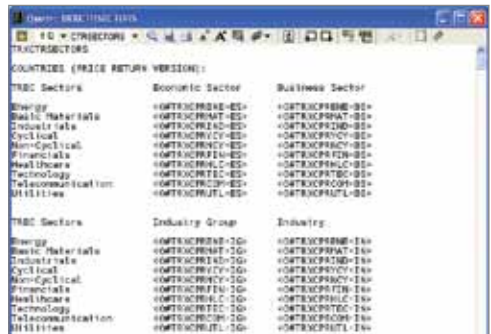
TOP TIPS FOR USING INDICES ON 3000 XTRA: FINDING CODES

USER TIP 1: Speedguides

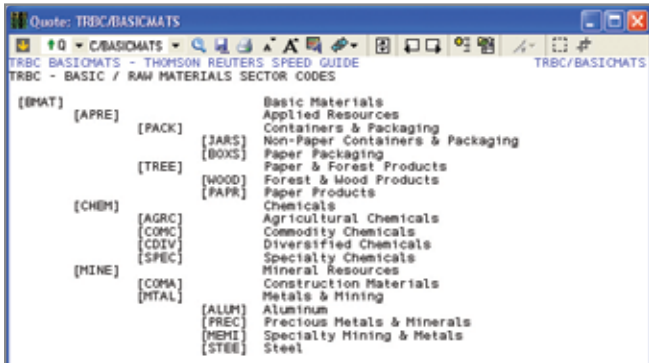
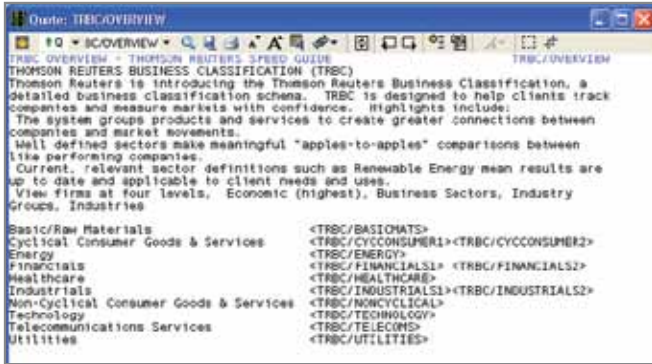
Overview Speedguide for all Thomson Reuters Indices: <TRXIND>



Sector Indices:
<TRXSECTORS>
<TRXCTRSECTORS>
<TRXREGSECTORS>



Sector indices are classified by the TRBC Hierarchy. To view which indices fall under Economic Sector, Business Sector, Industry Group and Industry, go to <TRBCOVERVIEW> and select the appropriate Sector.



- 1st column = Economic Sector
- 2nd column = Business Sector
- 3rd column = Industry Group
- 4th column = Industry

Click on any of the Sector codes to get related Reuters news.

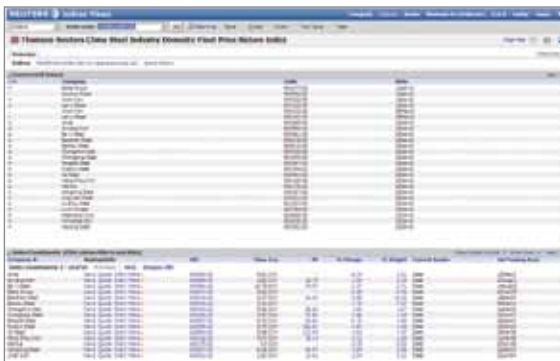
THOMSON REUTERS EIKON AND REUTERS 3000 XTRA continued



Indices View

Right-click on any index and then select **Related Index View (for Eikon)** or **Related Company Data (for 3000 Xtra)**, this brings you to Indices Views. Use this to view index constituents, weights, and relevant TRBC Sector for each constituent.

Constituents are also available by typing F3 after the index code in a RIC Window, or Matrix. Please note that constituents are only available for Price Return Indices.



Click on "constituents" to view the weights of each constituent in the index

Certain Valuation ratios are available in the overview tab. For estimates, performance indicators and other valuation ratios per constituent, click on the "constituents" tab

THOMSON REUTERS EIKON AND REUTERS 3000 XTRA continued

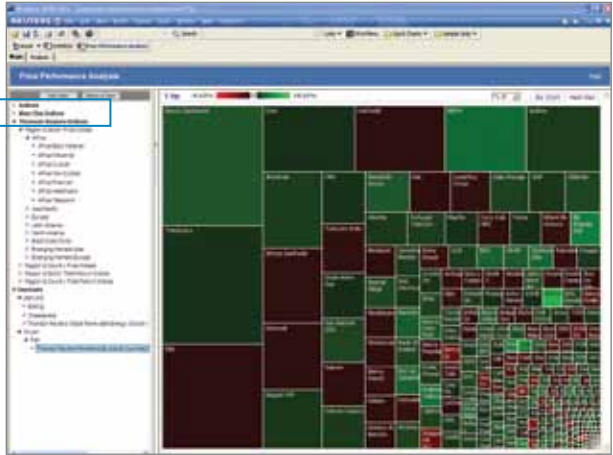
USER TIP 4:

Price Performance Analysis XMS Model

Use this to view relative performance on a region/country, or country/sector level.

To download this model, go to the 3000 Xtra Model Browser on the “Get Going” page, and enter #4452172 into the search box. Then search for Price Performance Analysis and the model should appear in the customized section.

Click “Thomson Reuters Indices” to find country, region and top level sector indices. Alternatively, enter RIC of any Thomson Reuters Index to view in more detail.



	Global	North America	Latin America	Asia Pacific	Europe	Africa	Global Index	Emerging Markets Asia	Emerging Markets Europe
All Indices	0.58%	0.88%	0.15%	0.25%	0.54%	0.78%	-0.87%	0.13%	-0.22%
Energy	0.61%	-0.4%	0.6	1.4%	0.85%	0.4	-0.49%	0.15%	0.55%
Basic Materials	0.27%	0.29%	-0.83%	0.34%	0%	0.28%	-0.27%	0.17%	-0.27%
Industrial	0.3%	0.07%	0.27%	0.88%	0.23%	0.12%	-0.24%	0.13%	-0.88%
Capital	0.18%	-0.45%	1.1%	0.86%	0.78%	0.47%	-0.2%	0.27%	0.28%
Non Capital	0.72%	0.97%	0.48%	0.48%	0.72%	0.2%	-0.87%	0.28%	0.17%
Financial	0.28%	-0.2%	-0.34%	0.22%	0.78%	-0.44%	0.42%	0.24%	0.14%
Healthcare	-0.22%	0.17%	0.4	0.27%	0.17%	0.48%	0.27%	-0.14%	0.58%
Technology	0.48%	0.42%	0.4	0.21%	0.17%	0.4	0.13%	0.2%	0.17%
Telecom	0.13%	-0.27%	0.44%	0.81%	0.42%	0.17%	0.13%	-0.19%	0.1%
Utility	0.18%	0.17%	0.28%	0.4	0.14%	0.4	0.23%	0.1%	0.1%

THOMSON REUTERS DATASTREAM

INDEX COVERAGE AND AVAILABILITY

- All Country, Region and Sector Equity Indices
- Commodity Indices
- End of Day Returns
- Current and Historical Index Constituents and Weights
- 11 years of Index History

Thomson Reuters Indices can be found within the EQUITY INDICES data category, or just type THOMSON REUTERS into the ENTER SERIES box in the main window on Datastream Advance.

TOP TIP FOR USING INDICES ON THOMSON REUTERS DATASTREAM

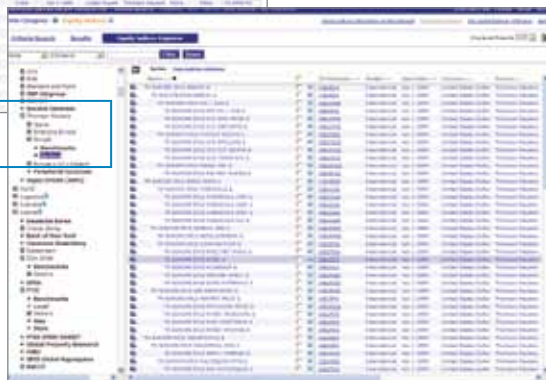


Using the Indices Explorer to find Thomson Reuters Indices by Country and Region



The extent of the indent for each index represents the level of granularity of each sector index

Under “Benchmarks at a glance,” expand “By Source” and then select “Thomson Reuters”. Click on a country to see all the indices available for that country.



Expand “By Market” then select the country/region of your choice. Select “Thomson Reuters” and “Benchmarks” for the country or region level index, or “Sectors” for all sector indices

STARLINE PROFESSIONAL

INDEX COVERAGE AND AVAILABILITY

- Country and Region Equity Indices
- End of Day Returns
- Index Constituents and Weights

TOP TIP FOR USING INDICES ON STARLINE PROFESSIONAL

USER TIP:

Creating Starline Aggregates for Valuations of Thomson Reuters Indices

Under the Stock Sets tab, go to “Starline Stock Sets” and click **Manage**.



Select the Thomson Reuters Country or Region Indices you would like to compare and analyze by ticking the boxes.

Then go to the **Compare** subtab and select the Thomson Reuters Indices previously chosen.



Click “Edit this View” to select the types of aggregates for your chosen indices.

PORTFOLIO ANALYTICS

INDEX COVERAGE AND AVAILABILITY

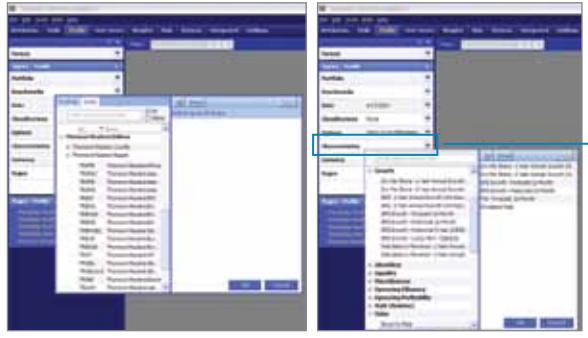
- Country and Region Equity Indices
- End of Day Returns
- Index Constituents and Weights
- Historical Index Constituents and Weights

TOP TIP FOR USING INDICES ON PORTFOLIO ANALYTICS



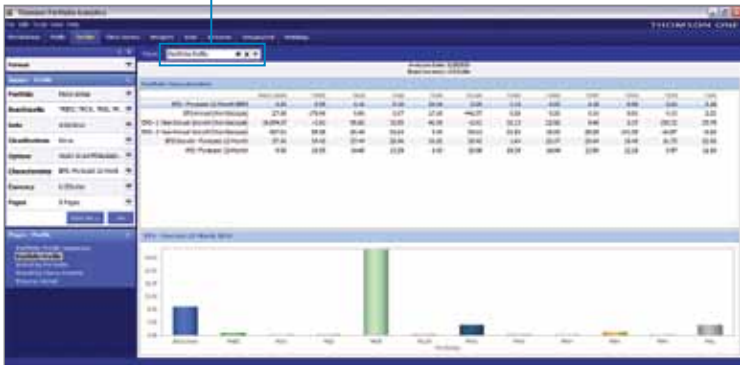
Creating Forward and Historical Aggregates of Thomson Reuters Indices

Under the “Profile” Tab, select the **Benchmarks** dropdown in the Input Section.



From the **Characteristics** dropdown, a variety of valuations are available.

Choose **Portfolio Profile** from the dropdown to compare your selected valuations across up to 20 Thomson Reuters Indices.



APPENDIX A: EQUITY INDICES COUNTRY AND REGION LIST

TR INDEX COUNTRY	EXCHANGE	TR INDEX COUNTRY	EXCHANGE
Argentina	• Buenos Aires Stock Exchange (MERVAL)	Kuwait	• Kuwait Stock Exchange
Australia	• Australian Securities Exchange (ASX)	Malaysia	• Bursa Malaysia
Austria	• Vienna Stock Exchange (Wiener Börse)	Mexico	• Mexico Stock Exchange
Bahrain	• Bahrain Stock Exchange	Morocco	• Casablanca Stock Exchange
Belgium	• Euronext Brussels	Netherland	• Euronext Amsterdam
Brazil	• Sao Paulo Stock Exchange (BM&F BOVESPA)	New Zealand	• New Zealand Stock Exchange
Canada	• Toronto Stock Exchange (TSX)	Norway	• Oslo Stock Exchange
Chile	• Santiago Stock Exchange	Oman	• Muscat Securities Market
China	• Shanghai Stock Exchange	Pakistan	• Karachi Stock Exchange
Denmark	• Copenhagen Stock Exchange	Philippine	• Philippine Stock Exchange
Egypt	• Egyptian Exchange	Poland	• Warsaw Stock Exchange
Finland	• Helsinki Stock Exchange	Portugal	• Euronext Lisbon
France	• Euronext Paris	Qatar	• Qatar Exchange
Germany	• XETRA (Deutsche Börse)	Russian	• MICEX
Greece	• Athens Stock Exchange	Singapore	• Singapore Exchange (SGX)
Hong Kong	• Hong Kong Stock Exchange	South Africa	• Johannesburg Stock Exchange
Hungary	• Budapest Stock Exchange	Spain	• Madrid Stock Exchange (Mercado Continuo)
India	• National Stock Exchange of India • Bombay Stock Exchange	Sweden	• Stockholm Stock Exchange
Indonesia	• Indonesia Stock Exchange	Switzerland	• SIX Swiss Exchange
Ireland	• Irish Stock Exchange	Taiwan	• Taiwan Stock Exchange
Israel	• Tel Aviv Stock Exchange	Thailand	• Thailand Stock Exchange (SET)
Italy	• Milan Stock Exchange	Turkey	• Istanbul Stock Exchange
Japan	• Tokyo Stock Exchange • Osaka Stock Exchange	UAE	• Abu Dhabi Securities Exchange • Dubai Financial Market
Korea	• Korea Stock Exchange (Koscom) • KOSDAQ	United Kingdom	• London Stock Exchange
		United States	• New York Stock Exchange • NASDAQ Stock Market • NYSE AMEX
		Vietnam	• Ho Chi Minh Exchange

APPENDIX B: EXCHANGES USED IN THOMSON REUTERS EQUITY INDICES

	Africa	APAC	APAC Ex Japan	APAC + Russia	BIC	BRIC	China Hong Kong Taiwan	EAFE	Emerging Markets APAC	Emerging Markets Europe	Europe Ex UK	Ireland	Eurozone	Eurozone Ex Peripheral Countries	CCC	G7	Global	Global/ Emerging Markets	Global Ex US	Ibexia	Latin America	MEIA	NIFTA	North America	OIC	Peripheral Eurozone Countries
Argentina																										
Australia																										
Austria																										
Bahrain																										
Belgium																										
Brazil																										
Canada																										
Chile																										
China																										
Czech Republic																										
Denmark																										
Egypt																										
Finland																										
France																										
Germany																										
Greece																										
Hong Kong																										
Hungary																										
India																										
Indonesia																										
Ireland																										
Israel																										
Italy																										
Japan																										
Korea																										
Kuwait																										
Malaysia																										
Mexico																										
Morocco																										
Netherlands																										
New Zealand																										
Norway																										
Oman																										
Pakistan																										
Philippines																										
Poland																										
Portugal																										
Qatar																										
Russia																										
Singapore																										
South Africa																										
Spain																										
Sweden																										
Switzerland																										
Taiwan																										
Thailand																										
Turkey																										
UAE																										
United Kingdom																										
United States																										
Vietnam																										

FURTHER INFORMATION

Read more about our index offerings, research and news at: <http://financial.thomsonreuters.com/indices>

For Queries relating to accessing Indices on Thomson Reuters Products:

Lucas Garland
Global Head of Product Management
Thomson Reuters Indices
Tel: +1 303 357 0564
Lucas.Garland@thomsonreuters.com

For Queries relating to index methodology:

Andrew Clark
Chief Index Strategist
Thomson Reuters Indices
Tel: +1 303 941 6017
Andrew.Clark@thomsonreuters.com

For Licensing indices and other off-the desktop use:

Jamie Robinson
Head of Commercial Strategy
& Business Development
Tel: +41 (0)79 933 26 55
James.Robinson@thomsonreuters.com

thomsonreuters.com

© Thomson Reuters 2011. All rights reserved.
Republication or redistribution of Thomson Reuters content, including by framing or similar means, is prohibited without the prior written consent of Thomson Reuters. 'Thomson Reuters' and the Thomson Reuters logo are registered trademarks and trademarks of Thomson Reuters and its affiliated companies. 47001686 0411



THOMSON REUTERS