

THOMSON ONE INVESTMENT MANAGEMENT

GAIN A COMMANDING VIEW OF THE MARKETS AND YOUR PORTFOLIOS

Thomson ONE Investment Management is the premier research and portfolio management solution from Thomson Reuters. This powerful real-time application delivers a broad and deep range of financial content and insight that expands your understanding of global financial markets. And, with our integrated portfolio analytics capabilities, you can perform in-depth analysis of your portfolios versus indices, sectors, industries, and custom benchmarks.

We provide direct, unfiltered access to industry-leading sources of financial information and analytics, all in a fully integrated workspace designed to help you better analyze your investable universe and monitor your holdings. We also provide effortless integration of this content into your proprietary Microsoft® Excel spreadsheets.

ACCESS WORLD-RENOWNED THOMSON REUTERS CONTENT SOURCES

In a single application, Thomson ONE Investment Management provides a robust lineup of world-class Thomson Reuters content, including:

- **First Call Notes and Research** – real-time morning notes and global equity and fixed income research reports from more than 700 brokers and independent research contributors
- **First Call and I/B/E/S Analyst Estimates** – the world's most comprehensive database of analyst estimates, both detailed and mean/median, featuring up to 28 forecast measures for more than 20,000 companies
- **StarMine Analyst Ratings and SmartEstimates** – performance analysis on nearly 7,000 sell-side analysts, and quantitatively derived estimates that help predict surprises
- **I/B/E/S Global Aggregated Forecast Data** – includes country, sector, industry and index levels
- **Worldscope Company Data** – covers 40,000 public companies in more than 50 developed and emerging markets going back to 1980
- **StreetEvents** – the most comprehensive and accurate corporate disclosure information, including events, transcripts, briefs, and guidance
- **Reuters Markets News** – accurate, timely, and objective financial and economic news from over 2,400 journalists around the world

- **Ownership data** – global ownership and profile data including funds, firms and insider holdings
- **Fixed income and credit analysis** – comprehensive bond, CDS, and index data, including terms and conditions, real-time pricing, risk measures, and more

EXPAND INSIGHT WITH SOPHISTICATED TOOLS AND ALPHA-GENERATING ANALYTICS

Outperforming your benchmark requires analytical tools to understand performance, investigate data relationships, and identify what data is critical, and what's just noise. All of the following functionality is available within Thomson ONE Investment Management.

Conduct in-depth portfolio analysis

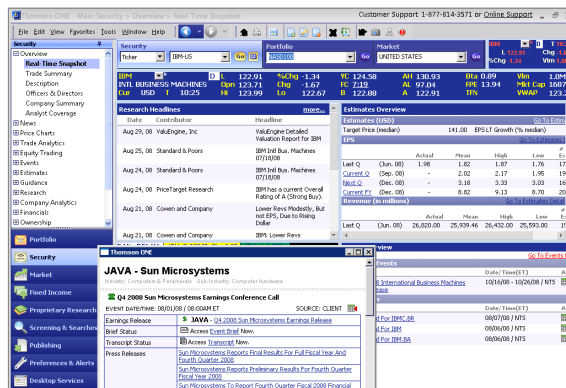
Evaluate your portfolio in real time and analyze historical performance, attribution, and risk with automatically integrated portfolio information. You can also manage trading, reporting, and operation of your portfolios.

Investigate data aggregates and complex data relationships

Gain a deeper understanding of historical trends with Datastream Charting. This powerful functionality allows you to investigate the correlations and relationships of any set of time-series data from Datastream, including global economic indicators and asset classes. The depth and breadth of available data is truly remarkable:

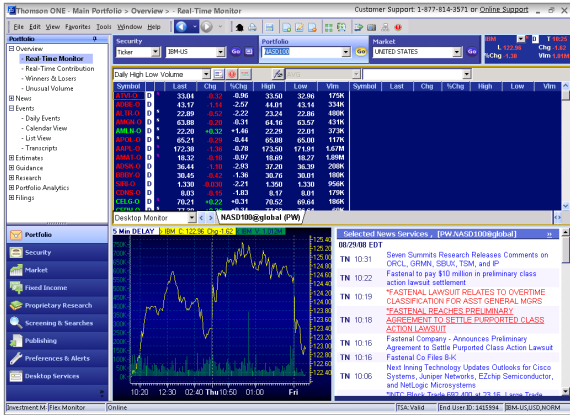
ABOUT THOMSON REUTERS

Thomson Reuters is the world's leading source of intelligent information for businesses and professionals. We combine industry expertise with innovative technology to deliver critical information to leading decision makers in the financial, legal, tax and accounting, scientific, healthcare and media markets, powered by the world's most trusted news organization. With headquarters in New York and major operations in London and Eagan, Minnesota, Thomson Reuters employs more than 50,000 people in 93 countries. Thomson Reuters shares are listed on the New York Stock Exchange (NYSE: TRI); Toronto Stock Exchange (TSX: TRI); London Stock Exchange (LSE: TRIL); and Nasdaq (NASDAQ: TRIN). For more information, go to www.thomsonreuters.com.



Easily monitor changes in your portfolio





Research securities and keep up to date with key events

- Up to 50 years of history on over 3.5 million global financial instruments and indicators
- Over 10,000 different fields totaling over 140 million time series
- Over 75,000 active (and 30,000 inactive) securities
- Covering 175 countries in 60 global markets

Monitor for negative developments and uncover new investment ideas

With the flood of new equity information released every day, StarMine's predictive equity analytics help you pinpoint pressing developments that demand your immediate attention. StarMine also helps you more effectively screen for new ideas. With StarMine you can:

- Identify the top-performing analysts on every stock and industry
- Predict earnings, revenue, and cash flow surprises
- Anticipate future analyst revisions
- Uncover earnings sustainability issues
- Generate more reliable growth estimates and intrinsic valuations

Broaden your understanding of the credit markets

Our integrated credit analysis tools enable a cross-asset class relative value perspective, and help you better evaluate a firm's capital structure. Our powerful capabilities allow you to:

- Screen a broad universe of bonds, credit default swaps, and indices
- Perform time series analysis of prices, volatility and spreads with sophisticated charting tools
- Link and compare corporate bonds, credit default swaps, and the related equity
- Analyze yield curves, credit and maturity profiles, and more

INCREASE YOUR EFFICIENCY AND CONNECTIVITY

Optimizing efficiency is a challenge for every professional investor. Thomson ONE Investment Management addresses this challenge by linking your workflow together in several ways.

Extend the power of your proprietary spreadsheets

Spend less time managing data with Thomson Reuters Spreadsheet Link. Our workflow-centric solution brings historical and real-time data into your spreadsheets, enabling more robust portfolio analysis. Spreadsheet Link also allows you to:

- Build custom templates, or access pre-built models from our template library
- Set precise screening criteria and have results delivered automatically
- Create unique data items or expressions with our Expression Builder
- Efficiently upload portfolio and shares held information to Thomson ONE

Communicate in real time with peers and counterparties

Real achievement rarely occurs in isolation – it's the result of collaboration. Reuters Messaging provides instant messaging and topic-focused chat rooms that put you in touch with a trusted, global community of over 100,000 financial professionals.

Stay on top of your portfolios anytime, anywhere

As a companion to the desktop, Thomson ONE Mobile for Investment Management delivers estimates, events, financials, news, quotes, alerts and market intelligence to your handheld. Access your own portfolio and view content on a portfolio or stock level via your BlackBerry®. Now you can stay connected to the critical information you need, even when you're on the move.

U.S. and Canada

+1 800 782 5555

Europe/Middle East/Africa

+44 (0)20 7369 7000

Asia/Pacific

+632 878 5772

Japan

+813 6441 1480

salesinquiry@thomson.com

thomsonreuters.com

