

ASSET4 assetmasterExecutive

MONITOR AND BENCHMARK ESG PERFORMANCE AND BEST PRACTICES

How is your response to climate change perceived by investors? Are your policies about workers' rights giving you an edge or creating a reputational risk? Are you implementing best practices in the area of corporate governance?

Assess your company's environmental, social and governance (ESG) performance and risk exposure using ASSET4 assetmasterExecutive. Our web-based solution provides easy access to over 250 key performance indicators and daily news updates related to corporate ESG topics covering more than 3,000 global companies.

Rely on ASSET4 assetmasterExecutive to:

- Reduce risk by tracking, managing and benchmarking your ESG policies and practices.
- Enhance corporate governance with access to objective and transparent information.
- Stay up-to-date on industry changes or issues by monitoring ESG-related news.
- Attract long-term investors by improving social responsibility performance and reporting.
- Analyze your ESG performance and reporting strengths, weaknesses and progress over time.
- Identify best-in-class emission and resource reduction policies and practices to improve your environmental sustainability.
- Gain unique access to the ESG performance levels and practices of your sector, industry, index or peers.
- Create simple-to-understand ESG performance reports to communicate with management and shareholders.

GAIN EASY ACCESS TO A WEALTH OF ESG INFORMATION

Examine ESG performance

- Monitor 250+ ESG key performance indicators (KPIs) and 650+ data points on thousands of the world's leading companies. Access multiple default configurations (e.g., the Global Reporting Initiative standard) to help you scrutinize the ESG performance of your company and your peers.
- Create individualized configurations by selecting from the entire list of indicators.

Benchmark ESG performance

- Create a company benchmark by choosing your company's industry, sector or country, or define a unique set of peers and competitors.
- Quickly highlight the KPIs in which your company led or lagged in the past 3 years, and identify specific strengths and weaknesses, in comparison to the benchmark.
- Obtain detailed information on the financial, environmental, social and corporate governance performance of your company and its peers.

Identify ESG best practices

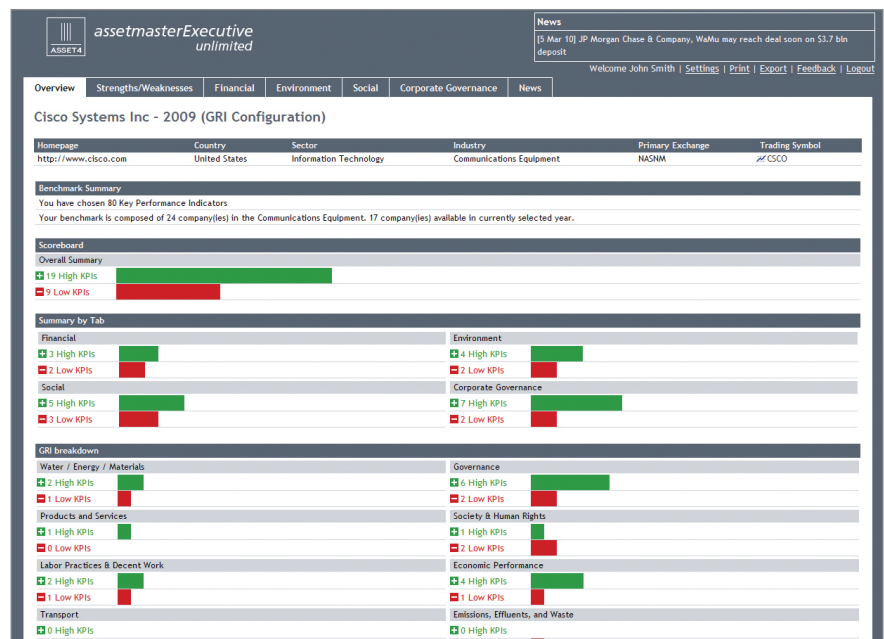
- Identify corporate social responsibility (CSR) best practices within your index, sector, industry or benchmark. Use this information to improve your own CSR policies and procedures.
- Generate a ranked list for each KPI highlighting the companies within the top and bottom quartile to clearly demonstrate how you measure up.

WHY ASSET4

- We transform publicly available information into consistent units for easy comparison.
- Our methodology is completely transparent – we provide a link back to the original information source.

WHY THOMSON REUTERS

- We provide the largest collection of business information in the world. Our global content is gathered and analyzed by regional experts.
- More than 6,000 corporations rely on our services which are backed by outstanding local client support.



With ASSET4 assetmasterExecutive you can quickly identify your ESG strengths and weaknesses against a variety of benchmarks such as sector, industry, stock exchange, country, region or a benchmark you create.



Obtain transparency

- Click on each KPI to view the underlying data points used to determine the value of the KPI.
- Access a textual description and hyperlink to the online source for each data point.
- Print detailed KPI information for easy analysis.
- Export all scores and rankings to Microsoft® Excel to enhance your reporting.

Uncover ESG-related stories

- Monitor ESG news for all companies within the ASSET4 universe. Specify the period of time you are interested in, the benchmark of companies and select from a list of predefined topics to view the matching news.
- Create a PDF of all the retrieved news or export the list of news to Microsoft® Excel.
- Click on any news item to see title, excerpt, URL to the full news story, publisher and publication date, as well as the KPI the news refers to.
- Set up daily email alerts so you are notified of news that matches your defined criteria.

The screenshot displays the 'Cisco Systems Inc - 2009 (GRI Configuration)' page. It features a navigation bar with tabs for Overview, Strengths/Weaknesses, Financial, Environment, Social, Corporate Governance, and News. The main content area shows the GRI configuration for Cisco Systems Inc. in the United States, Information Technology sector. A detailed view of the 'Water Use' KPI is shown, with a value of 45.80 m3/USD mil. The 'Details' section includes a table with columns for Title, Code, Description, and Year, showing data for 2009. A 'Water Use Total' table at the bottom right shows consumption in liters for FY07, FY08, and FY09.

Drill into each KPI to understand how it was calculated and access the original data source.

The screenshot shows the 'Cisco Systems Inc - 2009 (GRI Configuration)' page with a search filter for 'ESG News'. A list of news items is displayed with columns for Date, Company, Title, and Textual data. A news item titled 'Apple Shoots Down Two Shareholder Sustainability Proposals' is highlighted. The news item includes a date of February 26, 2010, and a brief summary of the event. A 'Popular Topics' section is also visible, listing various ESG topics.

View ESG-related news with access to the original news source.

Americas

+1 866 915 9891

UK & Ireland

+44 (0)20 7542 0400

Germany, Central Europe, Nordics & Russia

+49 69 7565 1570

France, Italy, Spain, Portugal & Benelux

+33 1 5332 3915

Middle East & Africa

+97 15 0632 0428

Asia Pacific

+61 2 9373 1200

corporateservices@thomsonreuters.com

thomsonreuters.com

