

# ASSET4 assetmasterProfessional

THE FLEXIBLE AND COMPLETE ESG PERFORMANCE MONITORING AND RATING SYSTEM

Issues such as climate change, environmental risk, executive remuneration and health & safety are becoming as important as traditional financial metrics. This change is why it is so crucial to have access to an objective and comparable environmental, social and governance (ESG) database as well as flexible and powerful tools to work with that data.

Assess the ESG performance and risk exposure of over 3,200 global companies with the ASSET4 assetmasterProfessional toolkit. Our web-based solution enables investment professionals to monitor, rate and benchmark company and portfolio performance against any combination of 750+ data points and 250+ key performance indicators (KPIs).

Rely on ASSET4 assetmasterProfessional to:

- Improve investment performance and reduce risk by integrating ESG factors to create a holistic view of corporate performance.
- Drive down research costs with access to comparable, systematic and integrated data.
- Increase revenue by enhancing investment research capabilities and creating new, innovative ESG-related financial products.
- Keep track of the latest environmental, social and governance news and controversies.
- Apply positive or negative screening criteria according to yours or clients' requirements.
- Monitor portfolios based on ESG-related risks and opportunities.
- Add long-term value by establishing objective engagement overlays.

## Objective, comparable and transparent data

- Only publicly available sources (e.g. annual reports, NGO websites, CSR reports) are used.
- Our over 100 analysts use their experience to collect relevant, comparable (companies often report in different units, scopes and formats) and up-to-date information.
- You have access to the raw data sources and content (e.g., text, title, page number, URL and publisher) for all data points, thereby ensuring that the information is auditable, traceable and completely transparent.
- Every answer to every data point question goes through a multi-step verification and quality control process.

## ESG key performance indicators and data points

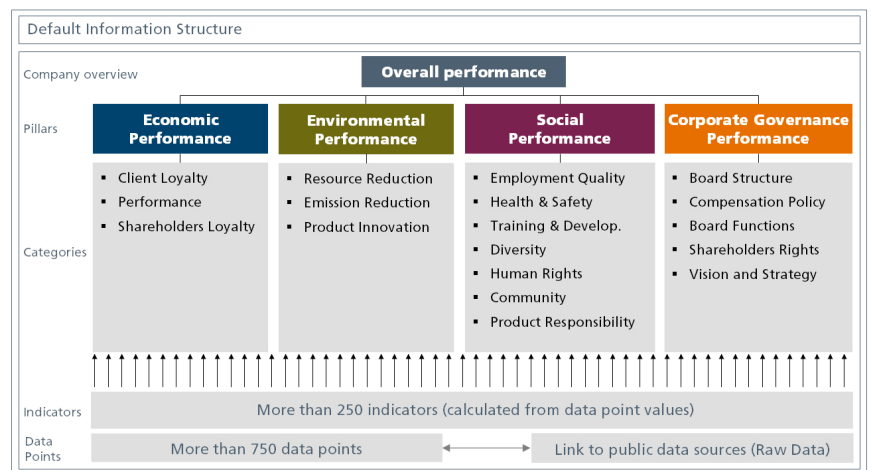
- Integrate 250+ ESG key performance indicators and 750+ data points into your investment analysis and research.
- By default the ASSET4 ESG information is aggregated into an equal-weighted data framework containing 18 categories within 4 pillars provide an overall integrated rating.
- Create custom ratings using any combination of pillars, categories or KPIs. Even create custom indicators from 750+ data points.
- All standard and customised ratings as well as KPIs and data points are downloadable into Excel via an Add-In for easy integration into everyday investment analysis.

## Different interfaces for different needs

- assetmasterProfessional One-Click
  - Rate performance of KPIs by benchmark (e.g. industry or sector)
- assetmasterProfessional
  - Create customized elements: portfolios, ratings, indicators, reports, alerts and news channels.
  - Work with z-scored ratings to evaluate overall company and portfolio ESG performance.
- assetmasterProfessional Excel Add-In
  - Integrate ASSET4 data into day-to-day Excel analysis
  - Create customized models and reports

## ABOUT THOMSON REUTERS

- Thomson Reuters is the world's leading source of intelligent information for businesses and professionals. We combine industry expertise with innovative technology to deliver critical information to leading decision makers in the financial, legal, tax and accounting, scientific, healthcare and media markets, powered by the world's most trusted news organization.
- With headquarters in New York and major operations in London and Eagan, Minnesota, Thomson Reuters employs more than 50,000 people in 93 countries. Thomson Reuters shares are listed on the New York Stock Exchange (NYSE: TRI); Toronto Stock Exchange (TSX: TRI); London Stock Exchange (LSE: TRIL); and Nasdaq (NASDAQ: TRIN).
- For more information, go to [www.thomsonreuters.com](http://www.thomsonreuters.com).



By default the ASSET4 ESG information is aggregated into an equal-weighted data framework containing 18 categories within 4 pillars that are integrated into a single overall score. Yet, this framework is completely customizable.

## assetmasterProfessional One-Click

### Simple-to-use interface

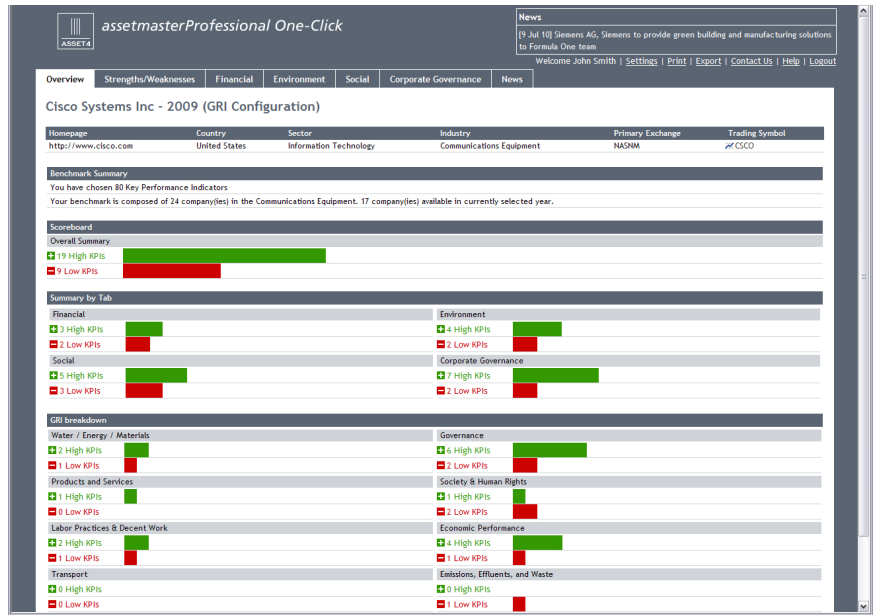
- Compare performance of companies on selected environmental, social and governance KPIs (80 by default, though you can create custom configurations from the 250+ available).
- Create customized reports showing peer performance and identifying the best-in-class.
- Quickly highlight the KPIs in which a company leads or lags and identify specific strengths and weaknesses in comparison to the benchmark.

### Identify best-in-class performers

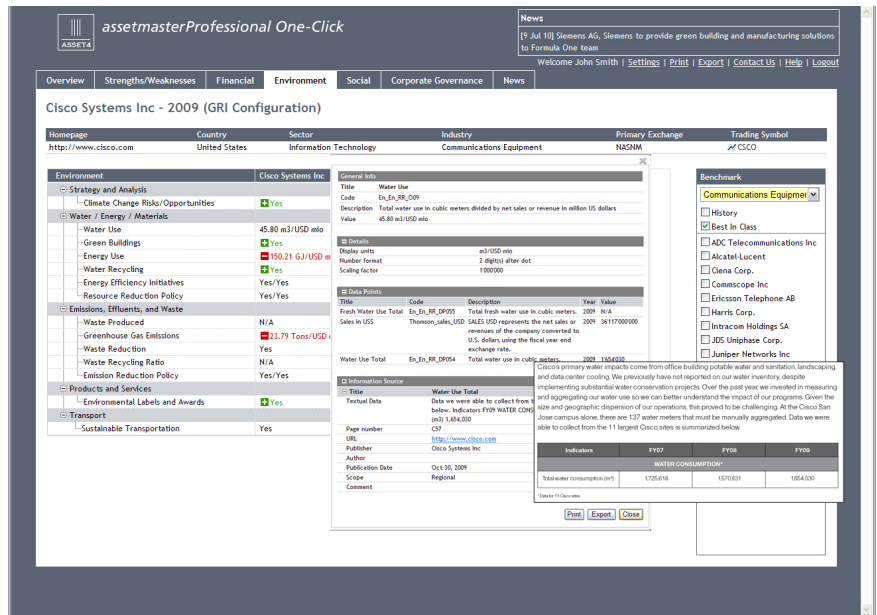
- Identify the best-in-class within a portfolio, industry or sector.
- Generate a ranked list for each KPI.
- Display the companies that appear within the top and bottom quartiles.

### Obtain transparency

- Click on each KPI to view the underlying data points used to determine the value of the KPI.
- Access a textual description and hyperlink to the online source for each data point.
- Print or export the detailed KPI information.



With ASSET4 assetmasterProfessional One-Click you can quickly identify a company's ESG strengths and weaknesses compared against a variety of benchmarks such as sector, industry, stock exchange, country, region or portfolio (green means it is in the top 25%, red means it is in the bottom 25%).



Drill into each KPI to understand how it was calculated and access the original data source.

For more information, contact your Thomson Reuters representative.

**Customizable configuration engine**

- Create customized elements: portfolios, ratings, indicators, reports, alerts and news channels.
- Upload existing portfolios using company codes such as TRBC, Cusip, Sedol or the Ticker Symbol along with the desired weights.
- Design your own indicators from any combination of the 750+ data points. For example, divide CO2 emissions by the number of employees, instead of the default division by revenue.
- Define your own ratings including any combination of default indicators and MyIndicators. For example, define a rating only focused on environmental and social criteria.
- Monitor the flow of ESG-related news and receive email alerts on a portfolio, sector or industry by creating a custom news channel.

**Dynamic ESG ratings**

- Traditionally ESG ratings have been based on the fiscal year reporting of companies. ASSET4 now enables you to work with dynamic ESG ratings that reflect the most recent ESG-related news controversies that involve any of the companies within the ASSET4 universe.
- ASSET4 ESG ratings present the most up-to-date picture of a company's actual ESG performance.
- The types of controversies incorporate in the ASSET4 ratings include:
  - Anti-Competition
  - Biodiversity
  - Business Ethics
  - Child Labor
  - Diversity and Opportunity
  - Employee Health & Safety
  - Human Rights
  - Insider Dealings
  - Intellectual Property
  - Management Compensation
  - Product Quality and Responsibility
  - Spills and Pollution

**Company Report for BP PLC (2009)**

Quote Symbol: BP-LN  
 Primary Exchange: London  
 FY Ending: 2009-12-31

Sector: Energy  
 Industry: Oil, Gas & Consumable Fuels  
 Country: Great Britain

Year: 2009 | Benchmark: ASSET4 Universe

---

**Emission Reduction/ Spills and Pollution Controversies (D-)**

(Company: 0% - Benchmark: 56% - Rank: 2201 / 2347 )

Weight: 5.56% - Code: En\_ER\_O20

Is the company directly or indirectly (through a supplier) under the spotlight of the media because of a controversy linked to the spill of chemicals, oils and fuels, gases (flaring) or controversy relating to the overall impacts of the company on the environment?

Value: Yes

The Emission Reduction/ Spills and Pollution Controversies indicator of BP PLC for the fiscal year ending 2009-12-31 stayed at the same level of D- as last year. When compared to the ASSET4 Universe, BP PLC is ranked at position 2201 out of a sample of 2347 companies. The worst-in-class companies from the ASSET4 Universe are 147 companies. The best-in-class companies from the ASSET4 Universe are 2200 companies.

---

**Data Points Rules**

if ((isAvailable(@En\_ER\_DP083) and @En\_ER\_DP083>0) or @En\_ER\_DP101>0) then yes else no

---

**Data Points**

Code: En\_ER\_DP101 (2009) | Title: Recent Spills and Pollution Controversies

Number of controversies linked to spills of chemicals, oils and fuels as well as controversies relating to the overall impacts of the company on the environment published since the last fiscal year company update.

Value: 2

Raw data:

Title:	Louisiana shrimpers sue BP over oil spill
Page number:	N/A
URL:	<a href="http://www.reuters.com/article/idUSN2917899720100429?type=marketsNews">http://www.reuters.com/article/idUSN2917899720100429?type=marketsNews</a>
Publisher / Author:	Reuters / Writing by Steve Gorman, editing by Mary Milken and Mohammad Zargham
Scope:	Global
Publication date:	2010-04-29
Textual Data:	Louisiana shrimpers have filed a class-action lawsuit against oil giant BP Plc and owners of the oil rig that exploded in the Gulf of Mexico, marking the first claim for economic losses stemming from the disaster.
Comment:	

The screenshot shows a Reuters article titled "Louisiana shrimpers sue BP over oil spill" dated April 29, 2010. The article reports that Louisiana shrimpers have filed a class-action lawsuit against BP PLC and owners of an oil rig that exploded in the Gulf of Mexico. It also mentions that Transocean and Halliburton are named as defendants. The article includes social media sharing options and a "Most Popular" list.

As recent history has shown, environmental, social and governance controversies can greatly affect the performance and reputation of companies. With access to the ASSET4 ESG news and dynamic ratings reflecting the most recent corporate controversies, you are sure your analysis reflects the most up-to-date information

**assetmasterProfessional Excel Add-In**

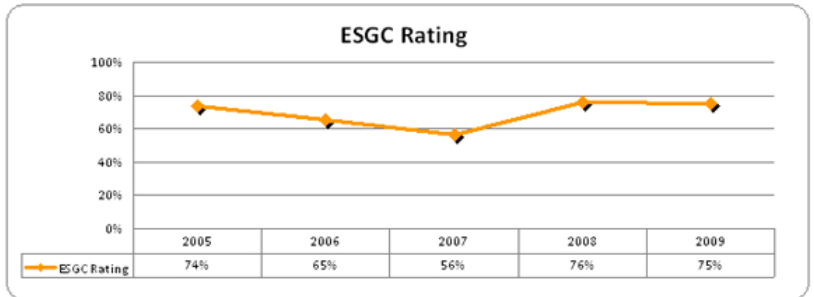
**Download ESG data directly into Excel**

- Access all 250+ KPIs and 750+ data points, as well as your customized portfolios, indicators, ratings and news channels.
- Generate custom graphs and reports combining ASSET4 information with other Thomson Reuters content or other financial information.

**Preconfigured Excel models**

- The Global Compact Compliance and Risk Monitoring Excel model allows you to quickly and easily know if a company:
  - Is a signatory of the Global Compact.
  - Has controversies linked to it associated with specific Global Compact principles.
- The Negative Screening Excel model provides a simple-to-use tool to evaluate the level of involvement of companies in areas such as:
  - Armaments
  - Nuclear power
  - Tobacco
  - Genetically modified organisms
  - Stem cell research
  - Animal testing
- The Controversies model (shown to the right) highlights the value of our dynamic ratings, which incorporate the latest ESG news stories and controversies into company ratings.
  - Highlights recent controversies for the selected company.
  - Provides access to information about the original news story including title, excerpt and a link to the original story.
  - The ESGC rating that we use in the template is a MyRating that adds a Controversies pillar including all controversies in our framework to the Environmental, Social and Governance pillars, which are all equally weighted.
- The Talk vs Walk model (shown to the right) highlights how you can use the ASSET4 driver (qualitative) and outcome (quantitative) KPIs and data points to evaluate performance:
  - Drivers track policies that cover issues such as emission reduction, human rights, and shareholder rights.
  - Outcomes track quantitative results such as greenhouse gas emissions, personnel turnover and highest remuneration package.

**Apple Inc**

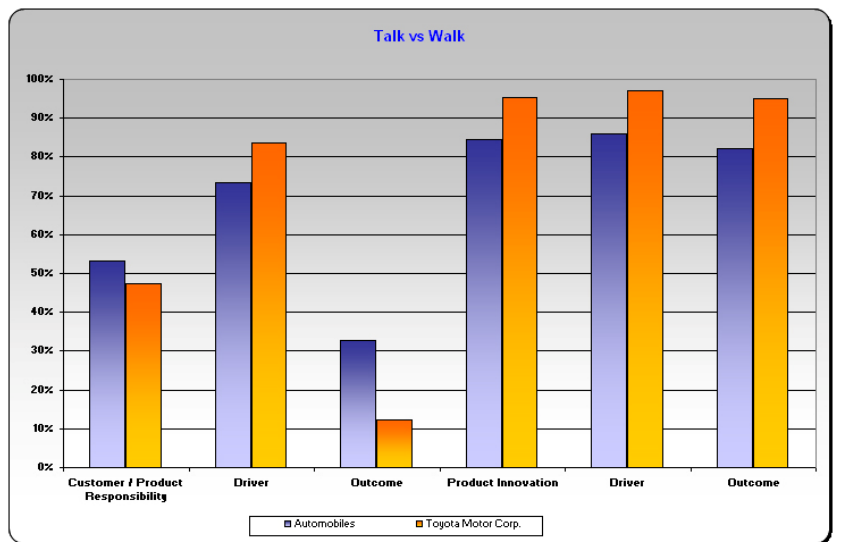


<b>Total Number of Controversies Published In The Media</b>	<b>87</b>
---	-----------

Data Point Code	Data Point Title	No. Controversies Published
Ec_Pr_SL_DP067	Accounting Controversies	1
Ec_Re_CL_DP039	Consumer Controversies	6
Ec_Re_CL_DP041	Recent Consumer Controversies	4
En_En_ER_DP101	Recent Spills and Pollution Controversies	1
En_En_PL_DP064	Product Impact Media Controversies	1
So_Cu_PR_DP054	Product Quality and Responsibility Controversies	1
So_Cu_PR_DP070	Recent Product Quality Controversies	4
So_So_Co_DP051	Intellectual Property Controversies	19
So_So_Co_DP052	Intellectual Property Controversy Costs	3
So_So_Co_DP058	Business Ethics Controversies	2
So_So_Co_DP059	Business Ethics Controversy Costs	1
So_So_Co_DP062	Anti-Competition Controversy	4
So_So_Co_DP068	Recent Business Ethics Controversies	1
So_So_Co_DP070	Recent Anti-Competition Controversy	2
So_So_Co_DP072	Recent Critical Countries Controversies	1
So_So_Co_DP073	Recent Intellectual Property Controversies	28
So_So_HR_DP036	Recent Child Labour Controversies	1
So_Wo_EQ_DP040	Wages or Working Condition Controversies Contractor	1
So_Wo_EQ_DP043	Wages or Working Condition Controversies (Company)	1
So_Wo_EQ_DP044	Recent Wages or Working Condition Controversies Contr	3
So_Wo_HS_DP046	Recent Employee Health & Safety Controversies	2

The fully updatable Excel-based Controversies model enables you to quickly highlight and evaluate key recent controversies a company is involved in.

	Customer / Product Responsibility	Driver	Outcome	Product Innovation	Driver	Outcome
<b>Automobiles</b>	53%	73%	33%	85%	86%	82%
<b>Toyota Motor Corp.</b>	47%	84%	12%	95%	97%	95%



For all ESG issues easily compare what a company says with what it actually does.