

# REUTERS TRADING FOR FOREIGN EXCHANGE

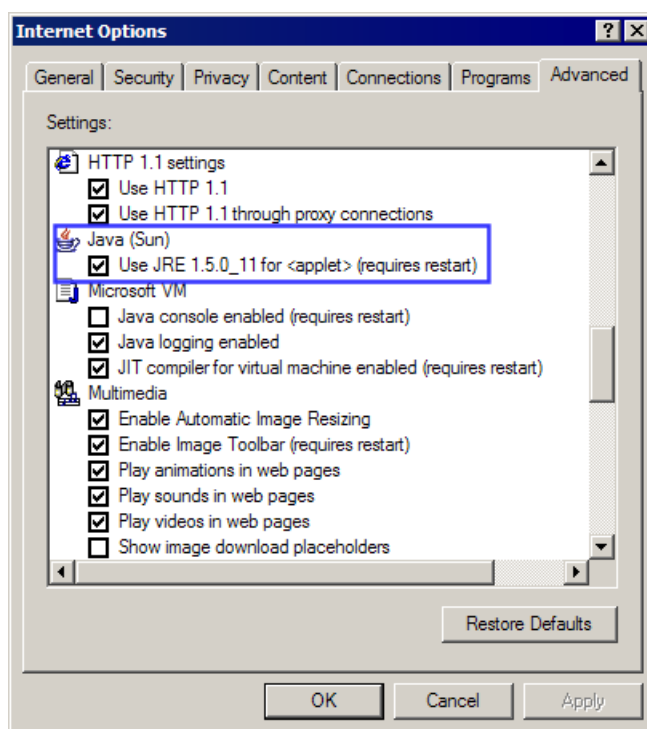
## Important Changes to support of Microsoft JVM from 1st Jan 2009

In order to use Reuters Trading for Foreign Exchange (RTFX) you need to have a Sun Java Runtime Environment (JRE) or Microsoft (MS) Java Virtual Machine installed.

On the 31<sup>st</sup> December 2007 Microsoft (MS) stopped the support of MS JVM. Since that date Thomson Reuters have continued to support clients using MS JVM. However from the 1<sup>st</sup> January 2009 we will no longer support MS JVM. This change will enable us to maximise the richer functionality of Sun Java Runtime Environment (JRE). If you are using a MS JVM you will have to change your Internet Explorer settings and use the correct Sun JRE.

### TAKE ACTION: Check which Virtual Machine you are using - if you are using Microsoft then switch to Sun Java

1. Launch Internet Explorer
2. Select **Tools>Internet Options**
3. Click the **Advanced** tab
4. Check whether you have **Java (Sun)** listed. If you do and the checkbox **is** ticked you need not take any further action as your PC is not using MS JVM.
5. If you do have **Java (Sun)** listed and the check box **is not** ticked then tick it. You will need to restart your computer for the settings to take affect. This will ensure Sun Java is used as the primary JVM.



6. If you do not have **Sun Java** listed and you only have **Microsoft VM** listed then contact your IT support team to request a Sun Java installation.

## Recommended Sun Java to use

Sun JRE 1.5.0\_11 is recommended. Thomson Reuters has also tested with recent updates of the Sun JRE 1.4.2 and 1.5.0, 1.6.0 families with no issues.

## Further support and additional information

For Thomson Reuters Customer Support please locate the contact details for your country:

Go to the Thomson Reuters Customer Zone at [customers.reuters.com/contactus](http://customers.reuters.com/contactus) and select your country from the drop-down menu. Alternatilvey you can find local phone numbers on IDN Quote Pages <HLP A> and <HLP B>.

You can also refer to the Microsoft website for further information:

<http://www.microsoft.com/mscorp/java/default.aspx>