

# FACTFILE

APRIL 2011

## Medicare Outpatient Services

The number of persons who receive hospital outpatient services under Medicare varies by state. These 2009 statistics show that Massachusetts has the most, at 865 per 1,000 population, and Nevada had the least, at 493 per 1,000.

### State Persons Served per 1,000 Enrollees

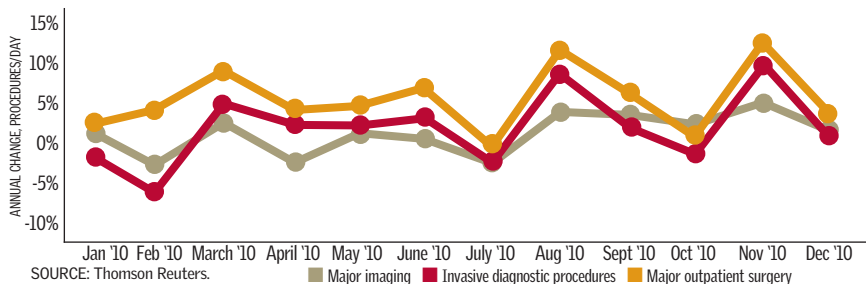
United States	696
1. Massachusetts	865
2. Minnesota	845
3. Vermont	828
4. Michigan	826
5. Pennsylvania	818
6. Ohio	799
7. Maine	786
8. Rhode Island	783
9. West Virginia	780
9. New Hampshire	780
11. Indiana	767
12. Illinois	763
13. Alabama	755
14. Utah	747
15. Virginia	741
16. Louisiana	737
16. Connecticut	737
18. South Carolina	733
18. Missouri	733
20. Kentucky	724
21. Wisconsin	718
22. Colorado	717
23. Delaware	715
24. Montana	712
25. Oklahoma	709
26. Tennessee	708
26. Georgia	708
28. District of Columbia	704
29. North Dakota	697
29. Mississippi	697
31. New Mexico	690
32. Iowa	684
33. North Carolina	678
34. New York	670
35. Nebraska	665
36. Wyoming	647
36. Oregon	647
38. Idaho	644
39. Arkansas	636
40. Alaska	632
41. Texas	629
42. Washington	622
43. Florida	619
44. New Jersey	609
45. Kansas	608
46. Maryland	604
47. California	600
48. South Dakota	594
49. Hawaii	589
50. Arizona	537
51. Nevada	493

## Outpatient Trends

The year ended pretty much where it began for many hospital outpatient procedures. Over the course of 2010, there were ups and downs, to be sure, but overall volume was fairly stable. Hospital outpatient visits and consults, too, were consistently topping 1 million per month, though the first and last months of the year showed decreased volume.

### ANNUAL CHANGE, MAJOR PROCEDURE GROUPS

Despite increases and decreases in volume over the course of 2010, as of December 2010, all three major procedure groups—major imaging, invasive diagnostic procedures, major outpatient surgery—maintained volumes relatively close to the January 2010 starting point. Invasive diagnostic procedures closed the year slightly up at 0.7% compared to negative 2% at the beginning of 2010. Major imaging began up 1.4% and, after peaking at 4.9% in November, ended December up 1.5%. Major outpatient surgery was up 2.5% in January, had double-digit growth in August and November, and closed December up 2.7%.



### HOSPITAL ATG TRENDS

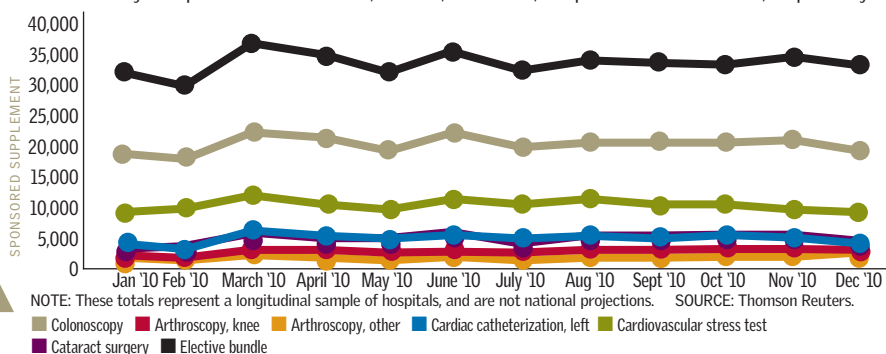
A review of hospital ambulatory technical group trends (a broad group of services) shows that invasive diagnostic procedures had volume of 45,172 in January and ended at 45,629 for December. Major outpatient surgery opened the year with 59,859 procedures, and posted 65,148 in December. Major imaging volumes began in January with 214,894, spent most of the year around 230,000 per month, and ended with 216,044 in December. In January, there were 933,360 hospital outpatient visits and consults and while volume in most months in 2010 neared or topped 1 million, December closed with 907,466.

	Jan '10	Feb '10	Mar '10	Apr '10	May '10	Jun '10	Jul '10	Aug '10	Sep '10	Oct '10	Nov '10	Dec '10
<b>Invasive diagnostic procedures</b>	45,172	42,728	53,294	51,141	48,579	51,832	48,886	50,226	50,016	49,363	48,995	45,629
<b>Major outpatient surgery</b>	59,859	57,764	68,071	65,259	61,711	66,683	62,046	64,808	63,791	63,071	64,514	65,148
<b>Major imaging</b>	214,894	197,686	236,325	226,126	227,223	232,365	232,913	236,166	233,278	234,516	220,848	216,044
<b>Visits, consults</b>	933,360	858,627	1,031,687	993,388	986,327	1,012,996	979,366	1,000,777	996,544	974,405	932,826	907,466

NOTE: These totals represent a longitudinal sample of hospitals, and are not national projections. SOURCE: Thomson Reuters.

### ELECTIVE PROCEDURE TRENDS

Elective procedures account for a significant portion of outpatient procedures, with a bundle of elective procedures (a representative list of important procedures) leading procedure volumes. In January 2010, there were 31,344 such procedures, peaking in March at nearly 36,000, and ending the year with 32,734 in December. Colonoscopies and cardiovascular stress tests round off the top three outpatient procedure volumes. They also peaked in March 2010, with 21,103 and 11,210 procedures that month, respectively.



NOTE: These totals represent a longitudinal sample of hospitals, and are not national projections. SOURCE: Thomson Reuters.

### Upcoming Topic:

> Workforce Wellness

### FACT FILE PARTNER:



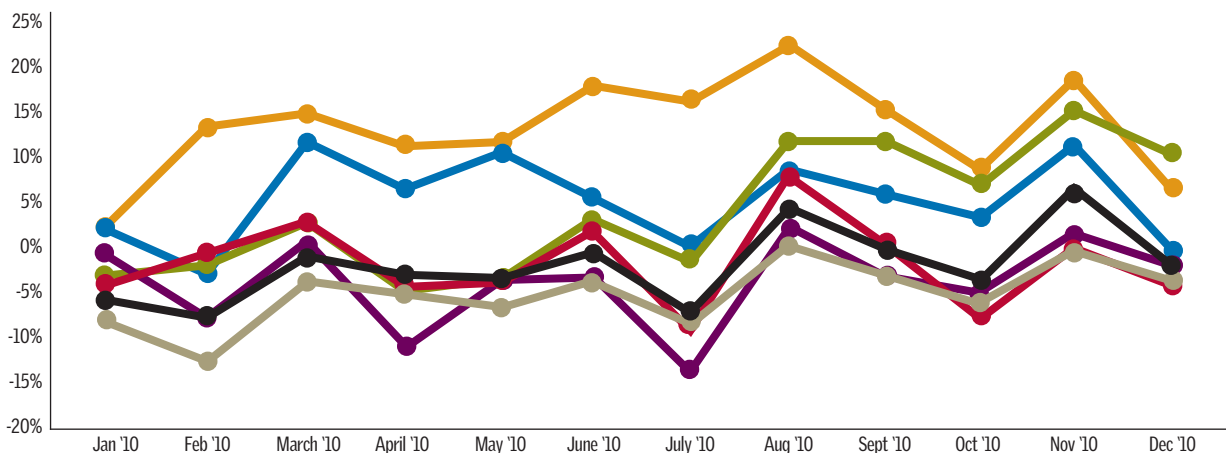
THOMSON REUTERS™

healthcare.thomsonreuters.com



## SELECT OUTPATIENT PROCEDURES, PERCENT CHANGE IN VOLUME

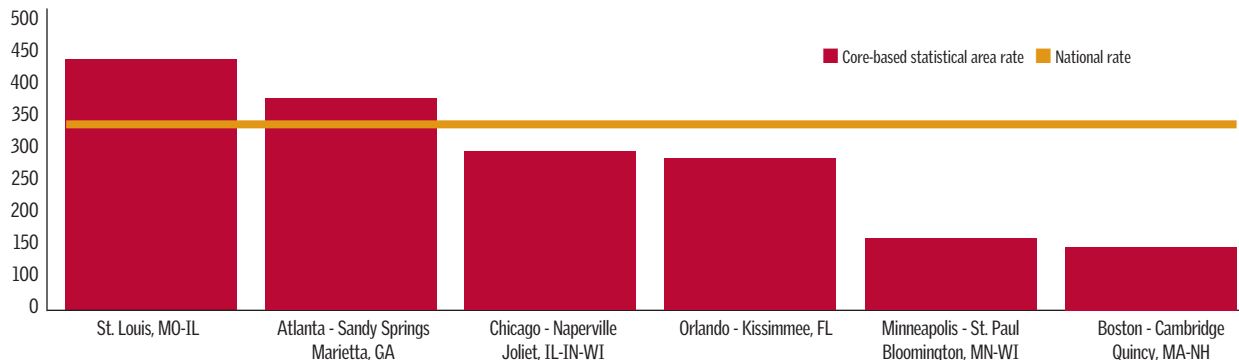
When examining trends for specific outpatient procedures there are variations and fluctuations throughout the year, but most of those measured here showed negative growth much of the year. Cardiovascular stress tests and arthroscopy had strong years, and each ended the year with positive growth in December.



SOURCE: Thomson Reuters. Legend: Colonoscopy (grey), Arthroscopy, knee (red), Arthroscopy, other (orange), Cardiac catheterization, left (blue), Cardiovascular stress test (green), Cataract surgery (purple), Elective bundle (black).

## CARDIAC CATHETERIZATION BY REGION

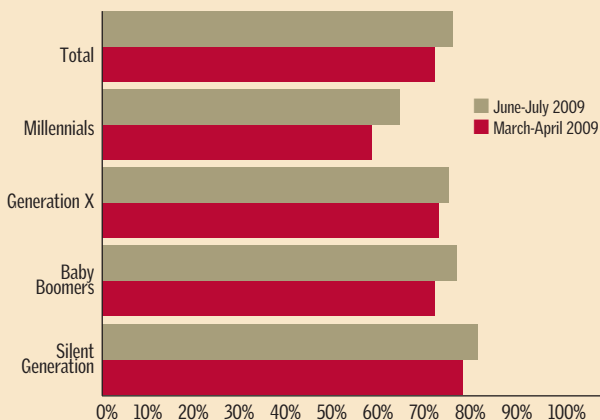
Procedure volumes can differ from region to region, and also can vary based on procedure. The top regions for cardiac catheterization differ from the top regions for general arthroscopy, for example. For cardiac catheterization, the St. Louis core-based statistical area has 435 procedures per 100,000 population, which is considerably higher than the national average of 323 per 100,000 population. The Boston area, by comparison, has just 132 procedures per 100,000 population.



SOURCE: Thomson Reuters.

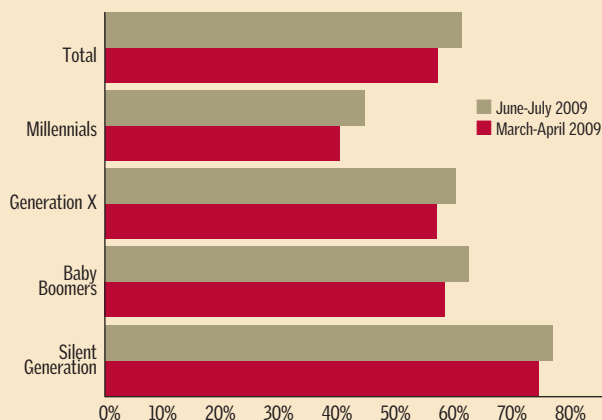
## LIKELIHOOD OF SEEING PHYSICIAN

This chart shows that most consumers, 73.4% in the summer of 2009, were willing to see their doctor, and were not likely to delay or cancel a visit. Such visits could be expected to lead to follow-up diagnostic tests and procedures and, as we see in the chart at right, patients' confidence in the ability to pay also was improving.



## LIKELIHOOD OF ABILITY TO PAY FOR TREATMENT

By mid-2009 consumers' concerns over having difficulty paying for healthcare services had abated somewhat, with overall rates of those not likely to have difficulty rising from 55.8% in the spring to 61.9% by summer. This confidence is greatest among Baby Boomers and the Silent Generation, which use outpatient services at the highest rates.



NOTE: Ranges vary, but generally, the Silent Generation is those born 1925-1945; Baby Boomers, 1946-1964; Generation X, 1965-1982; and Millennials, 1982-2001.  
SOURCE: Thomson Reuters.

