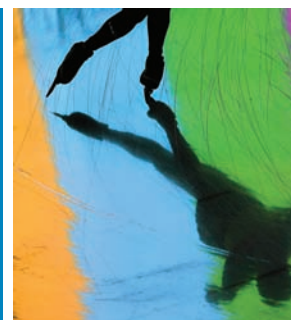


THOMSON REUTERS INTEGRITY

QUICK GUIDE SERIES: No. 15



HOW TO VALIDATE TARGETS IN YOUR RESEARCH ACTIVITIES WITH THOMSON REUTERS INTEGRITY

Need to have a detailed picture of the target landscape for various therapeutic areas?

Find out in this quick guide how the improved Targets & Pathways Knowledge Area of *Thomson Reuters Integrity*SM provides detailed information about precedented targets.

Benefit from a clearer representation and easy navigation to find target records within *Integrity* and see the association between targets and conditions.

Within the Targets & Pathways Knowledge Area of *Thomson Reuters Integrity*, you can also find the development status of the compounds in development with claims to act on a specific target.

This step-by-step guide will show you how to:

- Find a specific target
- See the association between targets and conditions
- See the development status of the compounds in development with claims to act on a specific target.
- Easily export the records retrieved into an *Integrity* Report

EXAMPLE SCENARIO: HOW TO VALIDATE TARGETS IN YOUR RESEARCH ACTIVITIES WITH THOMSON REUTERS INTEGRITY

A biochemist wants to investigate competitor information about a target reported to have discovery phase compounds with a novel class of inhibitors that have been claimed for therapeutic intervention in cancer.

1. FIND A SPECIFIC TARGET WITHIN INTEGRITY

- The **Targets & Pathways Knowledge Area** provides *Integrity* users with detailed information about precedented targets (targets that have at least one compound reported to act against them). The easy-to-navigate records give *Integrity* users the power to see the target conditions and the status of the condition based on the phase of the compounds that are being developed for that indication.
- To search for targets start in the **Advanced Search** form of the **Targets & Pathways Knowledge Area** and select the **Target Name** field. Use the index to find the terms you are looking for. (FIGURE 1)

Tip:

- Type all or part of the name into the lookup box in the index to find the *Integrity* controlled vocabulary terms for your search.
- Having selected the relevant targets you can now start your search. If more than one result is retrieved a list of summarized target records is displayed. (FIGURE 2)
- To see the full target records open the **Options** pulldown menu and then select **Full Records**.
- You can now examine the records which contain information including the related names, Description/Function, hyperlinks to third-party resources like UniProt and PDB, and in some cases a Targetscape or scientific animation is also included. (FIGURES 3, 4 and 5)



FIGURE 1

Target Name	Description/Function	Status	Links
SAP kinase 1	Other kinases (Systemic disorders)	V C E	UniProt: Q12512 PDB: 1SAP
SAP kinase 2	Other kinases (Systemic disorders)	V C E	UniProt: Q12513 PDB: 1SAP2
SAP kinase 3	Other kinases (Systemic disorders)	V C E	UniProt: Q12514 PDB: 1SAP3
SAP kinase 4	Other kinases (Systemic disorders)	V C E	UniProt: Q12515 PDB: 1SAP4
SAP kinase 5	Other kinases (Systemic disorders)	V C E	UniProt: Q12516 PDB: 1SAP5
SAP kinase 6	Other kinases (Systemic disorders)	V C E	UniProt: Q12517 PDB: 1SAP6
SAP kinase 7	Other kinases (Systemic disorders)	V C E	UniProt: Q12518 PDB: 1SAP7
SAP kinase 8	Other kinases (Systemic disorders)	V C E	UniProt: Q12519 PDB: 1SAP8
SAP kinase 9	Other kinases (Systemic disorders)	V C E	UniProt: Q12520 PDB: 1SAP9
SAP kinase 10	Other kinases (Systemic disorders)	V C E	UniProt: Q12521 PDB: 1SAP10
SAP kinase 11	Other kinases (Systemic disorders)	V C E	UniProt: Q12522 PDB: 1SAP11
SAP kinase 12	Other kinases (Systemic disorders)	V C E	UniProt: Q12523 PDB: 1SAP12
SAP kinase 13	Other kinases (Systemic disorders)	V C E	UniProt: Q12524 PDB: 1SAP13
SAP kinase 14	Other kinases (Systemic disorders)	V C E	UniProt: Q12525 PDB: 1SAP14
SAP kinase 15	Other kinases (Systemic disorders)	V C E	UniProt: Q12526 PDB: 1SAP15
SAP kinase 16	Other kinases (Systemic disorders)	V C E	UniProt: Q12527 PDB: 1SAP16
SAP kinase 17	Other kinases (Systemic disorders)	V C E	UniProt: Q12528 PDB: 1SAP17
SAP kinase 18	Other kinases (Systemic disorders)	V C E	UniProt: Q12529 PDB: 1SAP18
SAP kinase 19	Other kinases (Systemic disorders)	V C E	UniProt: Q12530 PDB: 1SAP19
SAP kinase 20	Other kinases (Systemic disorders)	V C E	UniProt: Q12531 PDB: 1SAP20

FIGURE 2



THOMSON REUTERSTM

- You can also find in the target record the **Condition (Status)** field. This field contains information about the conditions and the status of the compounds in development with claims to act on that target. For each condition the status can be:
 - Exploratory Conditions:** a target associated with one or more products undergoing Biological Testing for the condition in question
 - Candidate Conditions:** a target associated with products previously reported to be under active development in preclinical or clinical phases but where the products are no longer under active development for the condition in question.
 - Validated Conditions:** a target associated with the mechanism of action of one or more products that is under active development in preclinical or clinical phases or is registered or launched for the condition in question.



FIGURE 3

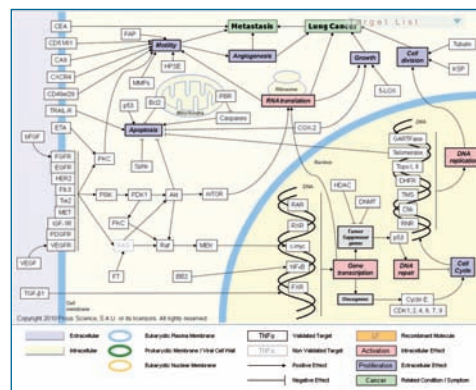


FIGURE 4

Tip:

- Hover the mouse over the V,C,E icons to see the definition of each status.

- Click **Expand All** to see the all conditions and the status. (FIGURE 6)
- You can then click straight through to the related compounds for that particular condition by clicking **View Drugs**, for example next to Cancer. You are taken to the **Drugs & Biologics Knowledge Area**, where you can view the list of related products. To see the **Structures**, open the **Options** menu and then select **Product List with Structures**. (FIGURE 7)

2. EXPORTING YOUR RESULTS

- You may now wish to export your results. There are two possibilities and both can be found in the **Options** menu. The **Export Center** allows you to export your results to Excel, Word, BizInt, and SDF file format. Also available is **Integrity Reports** which allow you to export your results as well as the related information from other **Knowledge Areas**. (FIGURE 8)

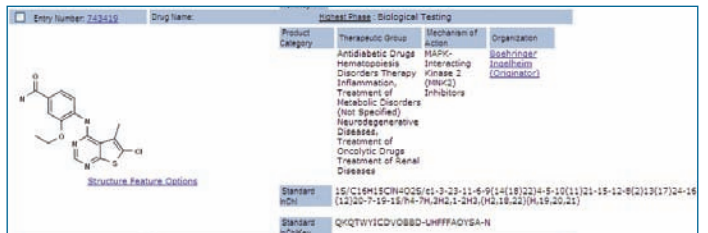


FIGURE 7

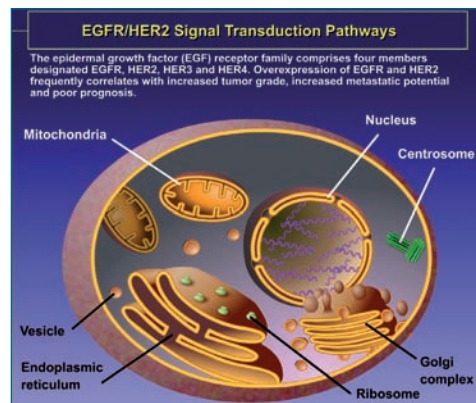


FIGURE 5

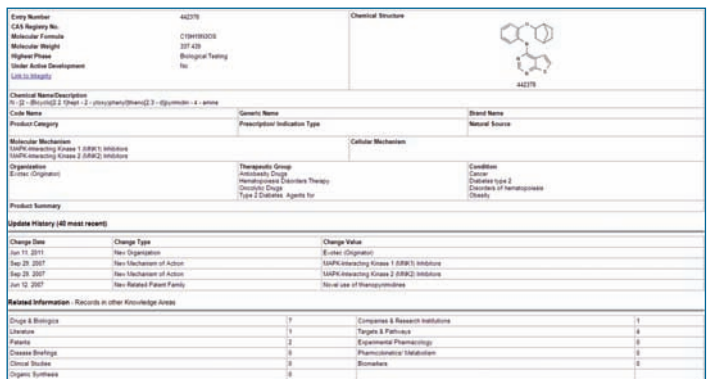


FIGURE 8

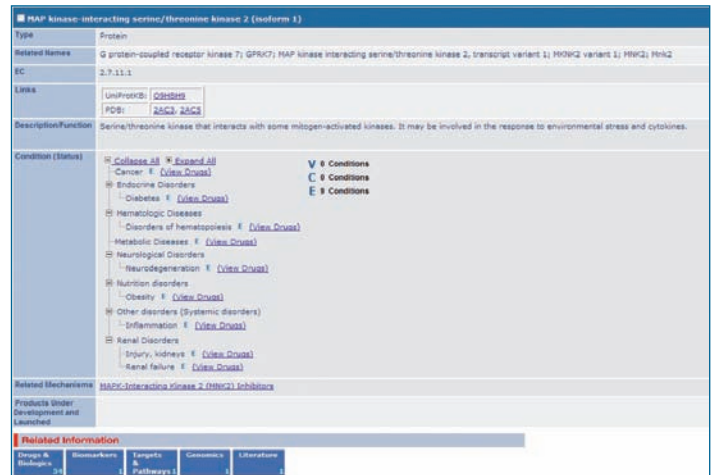


FIGURE 6

Click here to view other guides in the *Integrity Quick Guide series*.
 If you have any questions about using *Integrity*, please contact us at: integritysupport@thomsonreuters.com