

Introducing Thomson Reuters Panoramic

A BOLD NEW VISION FOR
THE WAY YOU WORK

**Connecting the practice and
business of law.**

A unique workflow solution that
enables you to plan, manage,
and execute legal matters with
data-driven confidence.



Built by lawyers, for lawyers, Panoramic™ is a solution like no other. It pairs the depth of content provided through Practical Law™-drafted Thomson Reuters Matter Maps™ with the budget-to-actuals data from 3E®. The result is a cloud-based solution that offers a truly integrated and holistic approach to matter management.

legal-solutions.co.uk/panoramic



Created with firms like yours

Co-design partners K&L Gates and LeClair Ryan are among the many partners who supported the ideation and development of Panoramic. They, along with 22 innovation advisors and 10 beta customers, provided valuable feedback on features, user experience, and content. The Panoramic Development team, with deep experience in both law and software, used this input to develop Panoramic.



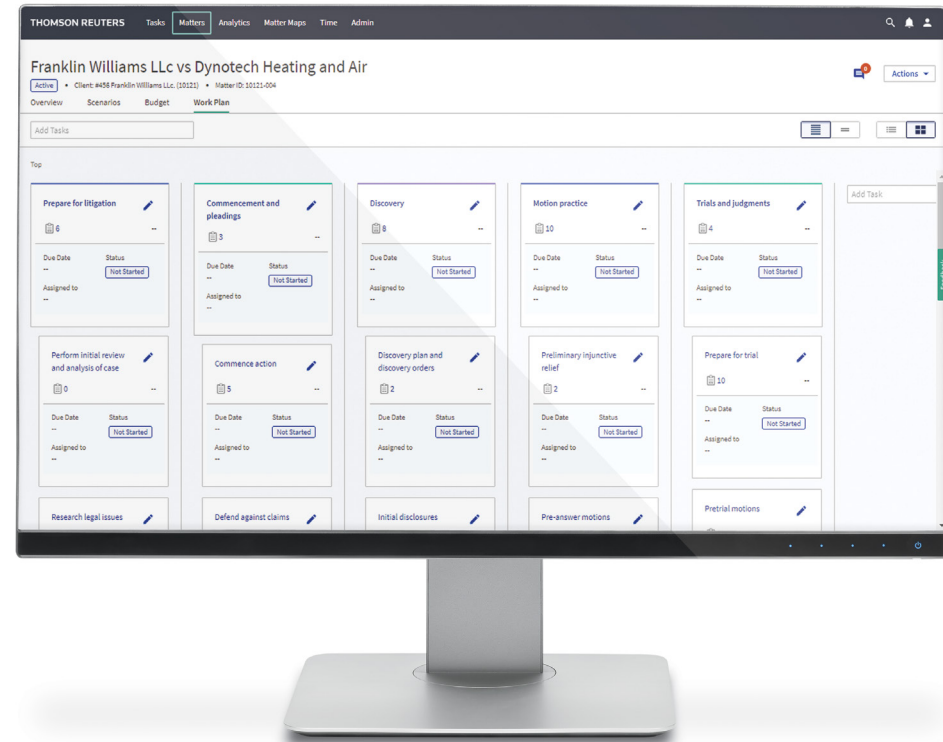
Scan this code with your smartphone to watch this video
here legal-solutions.co.uk/panoramic

Plan Profitably

WITH DYNAMIC WORKFLOW

Make informed scoping and pricing decisions and ensure you and your clients' expectations remain aligned throughout the matter.

- Use Thomson Reuters Matter Maps to provide the client with an overview of the phases of work and core tasks your team needs to carry out when undertaking a matter
- Customise Matter Maps to reflect your firm's best practices, proprietary information, and the legal strategy needs of specific clients
- Scope the work, price, and budget new matters using data pulled in from 3E™
- Make data-driven decisions leveraging prior matter information, tasks, analytics, and financial data to inform future similar matters
- Provide lawyers with better training through Matter Maps that show best practices and typical matter events

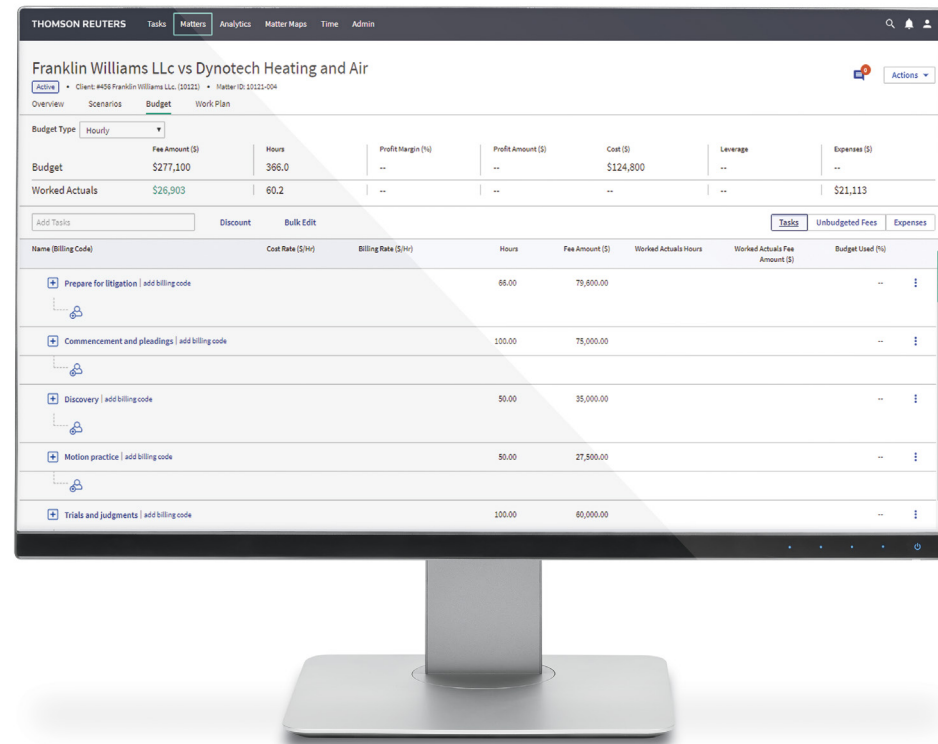


Manage Confidently

WITH EMBEDDED GUIDANCE

Improve profitability, delegate and prioritise work, stay on top of matters, and drive consistent client outcomes with task assignment and management dashboards.

- Track the status across all of your open matters at a glance with the Matter Directory
- Give users a clear outline of what needs to get done from the onset using Matter Maps that adapt automatically to the evolving facts of the matter
- Assign work, set deadlines, and create alerts to indicate when work is assigned and completed
- Prioritise and manage tasks across matters with a personalised tasks dashboard



The screenshot displays the Thomson Reuters legal management software interface. The main header shows the matter name "Franklin Williams LLC vs Dynotech Heating and Air" and the client "Franklin Williams LLC (2022)". The interface is divided into several sections:

- Budget Summary:** A table showing budget and worked actuals.
- Task List:** A table listing tasks with columns for Name, Billing Code, Cost Rate, Billing Rate, Hours, Fee Amount, Worked Actuals Hours, Worked Actuals Fee Amount, and Budget Used (%).

Budget Type	Fee Amount (\$)	Hours	Profit Margin (%)	Profit Amount (\$)	Cost (\$)	Leverage	Expenses (\$)
Budget	\$277,100	366.0	--	--	\$124,800	--	--
Worked Actuals	\$26,903	60.2	--	--	--	--	\$21,113

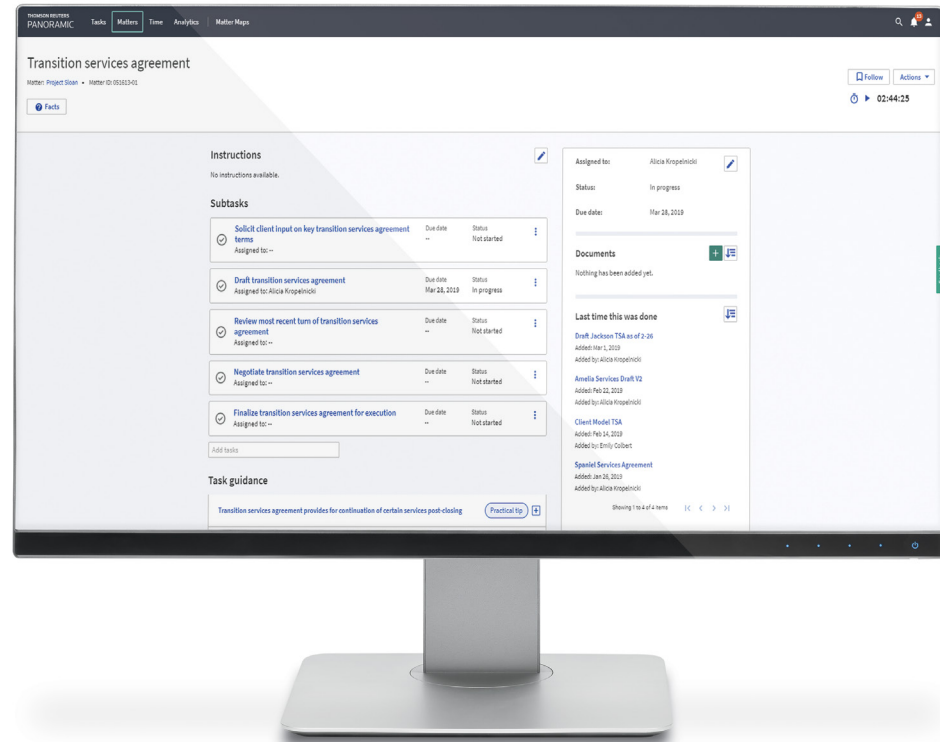
Name (Billing Code)	Cost Rate (\$/hr)	Billing Rate (\$/hr)	Hours	Fee Amount (\$)	Worked Actuals Hours	Worked Actuals Fee Amount (\$)	Budget Used (%)
Prepare for litigation add billing code			66.00	79,600.00			--
Commencement and pleadings add billing code			100.00	75,000.00			--
Discovery add billing code			50.00	35,000.00			--
Motion practice add billing code			50.00	27,500.00			--
Trials and judgments add billing code			100.00	60,000.00			--

Execute Successfully

WITH ACTIONABLE INSIGHTS

Ensure your team executes a matter using best-in-class guidance with knowledge resources right at their fingertips. Panoramic provides links to model documents and practice guides from Practical Law embedded in customisable and dynamic Matter Maps. Activity tracking enables more accurate and consistent time entry.

- Utilise expert guidance at every stage, drafted and maintained by Practical Law editors
- As matter facts change, tasks in the Matter Map automatically update, keeping team members informed of the changes
- See what lawyers in your firm did the last time they executed a particular task
- Task-based time entry and timers auto populate fields and push to 3E as pending time
- Reconstruct your day activity timeline for quicker and more accurate time entry



Extend the Value ACROSS THE FIRM

Panoramic serves multiple team members on a single platform, simplifying and boosting firm-wide productivity and compliance. As a result, your firm can broaden its strategic visibility and easily develop and preserve talent.

Operations

- Improve transparency
- Enhance process consistency

Finance

- Gain better realisation rates and reduce write-offs
- Boost efficiency and mitigate risk

Training and Development

- Attract and retain top-performing talent
- Employ better-informed and less stressed lawyers

Technology

- Provide one coherent deployment of technology
- Count on security, flexibility, and mobility

Knowledge Management

- Gain easier access to relevant knowledge resources
- Deliver consistent legal services



What managing partners are saying about Panoramic



It's a one-stop shop for junior lawyers looking for process and precedents on a certain transaction."

M&A Partner



We do some of this in different ways, with different products. But I've never seen something this substantive all in one place. There is no current way to track progress against a budget."

Litigation Partner

Truly integrating the practice and business of law is the key to your success

Make data-driven decisions leveraging prior matter analytics, budget-to-actuals, and profitability insights. As a cloud-based solution with an open integration framework, Panoramic allows for multiple secure connections to on-premises systems—giving your firm the power today and the flexibility to grow in the future.

- Benefit from proven workflows with customisable and dynamic Matter Maps, providing a comprehensive overview of the phases of work and core tasks required for matters
- Execute on tasks more confidently and manage legal teams more effectively with easier task delegation and more complete knowledge handoffs
- Tap into your prior Matter Maps repository to confidently build project plans and efficiently manage new matters
- Deliver excellent client service and ensure client objectives are achieved using a work plan that adapts to changing circumstances

Discover Panoramic at legal-solutions.co.uk/panoramic

The intelligence, technology and human expertise
you need to find trusted answers.



the answer company™

THOMSON REUTERS®